



Wiring trunking

Precise measurements and tested quality

Precise measurements and tested quality

An exceptionally large range of products in the usual high quality: Wiring trunking ensures tidy wiring in a switchgear cabinet. All the trunking is made from lead-free material. And, for optimum safety, a selection of halogen-free trunking is available from our range.

Four systems are available for professional wiring installations, which can fulfil any requirements the switchgear cabinet constructor might have. A soft, burr-free slot and rounded tabs make the installation easier and also prevent injuries. Upon request, we can also offer special designs.

The LK4 and LK4/N as well as the LKV and LKV/N trunking systems have exactly predetermined points for easy breaking-out of the side retainers. All the types have, depending on their size, single or dual track perforation to their base. Tapering in the side slots of the LK4/N and LKV/N types prevents the cables from falling out.

LK4 – nominal dimensions are internal dimensions
LKV – only external dimensions



LK4 and LK4/N



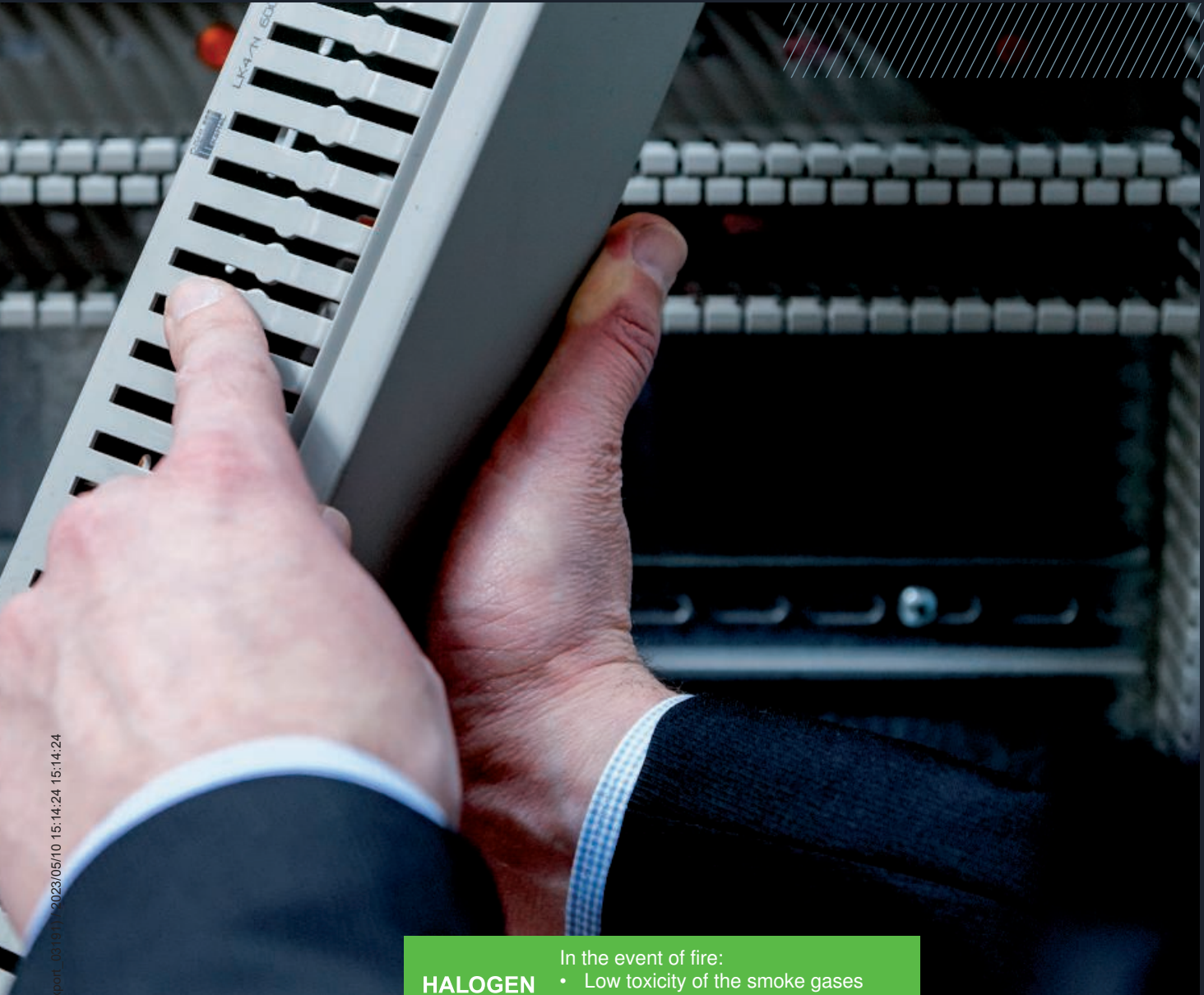
With the LK4 and LK4/N systems, OBO can offer a classic wiring trunking with 21 established metric dimensions from 15 x 15 mm to 80 x 120 mm. Precise processing enables simple attaching and detaching of the cover while, at the same time, ensuring a firm fit.

LKV and LKV/N



The LKV and LKV/N systems are termed DIN trunking, as their dimensions correspond to the old DIN standard 43659. Seventeen different dimensions from 25 x 25 mm to 100 x 100 mm are available.

Certified
The wiring trunking is VDE-tested and UL-listed (UL file E301798).



**HALOGEN
FREE**

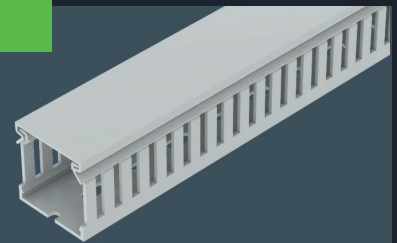
- In the event of fire:
- Low toxicity of the smoke gases
 - Scarcely any release of corrosive gases

LK4H



The LK4H wiring trunking is also available as a halogen-free version. The halogen-free version is available in dimensions from 30 x 30 mm to 100 x 100 mm and can fulfil any size requirements.

LKV/H



The LKV/H wiring trunking is halogen-free and available in eight different sizes from 50 x 37.5 mm to 75 x 125 mm.

exp001_03 15/11/2023/05/10 15:14:24 15:14:24

Modular system

Wiring trunking

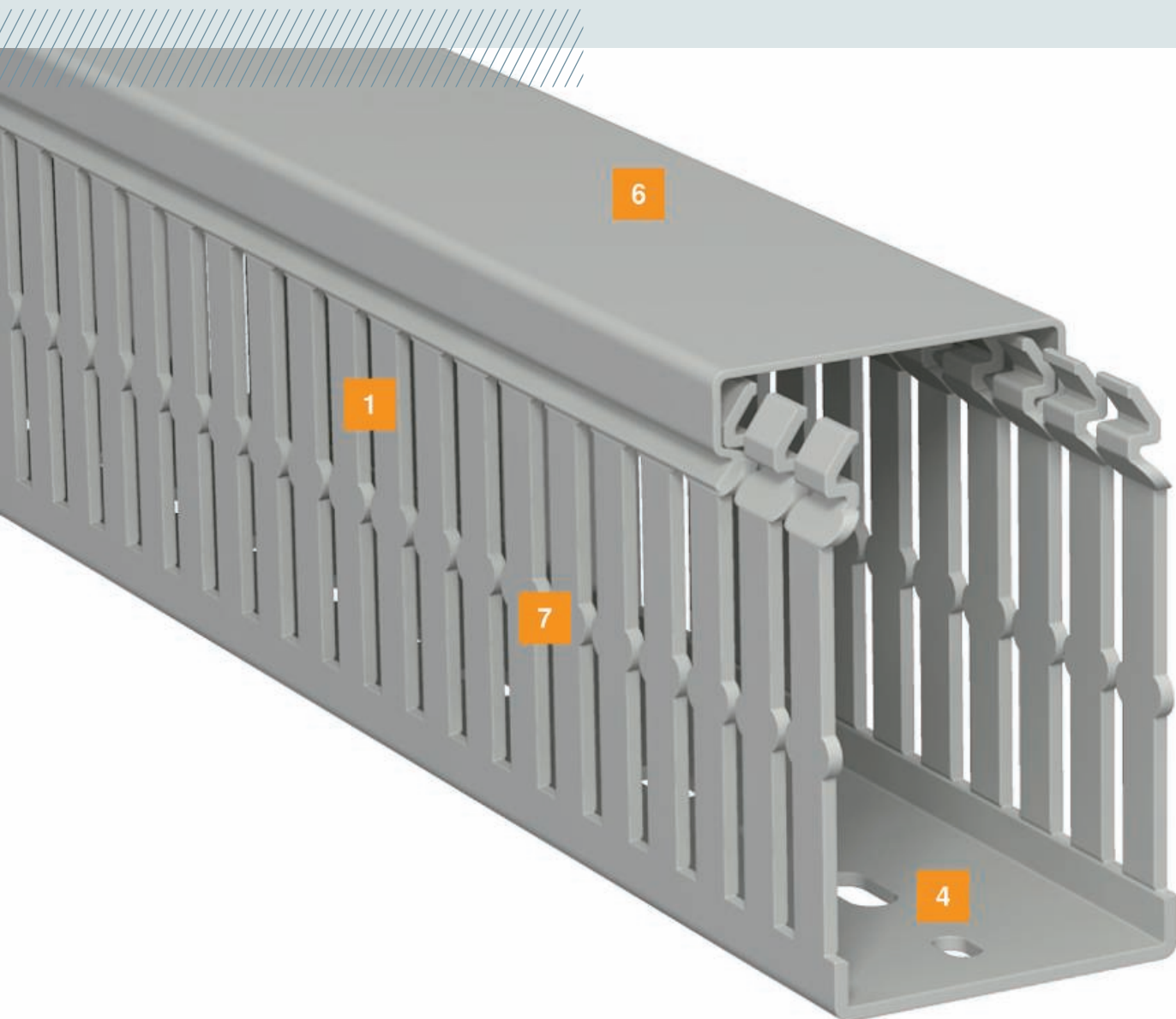
OBO wiring trunking stands out through a wide range of benefits which have long proven their worth in switchgear cabinet construction. Even in continuous operation, it guarantees secure connections and the reliable function of the electrical infrastructure.



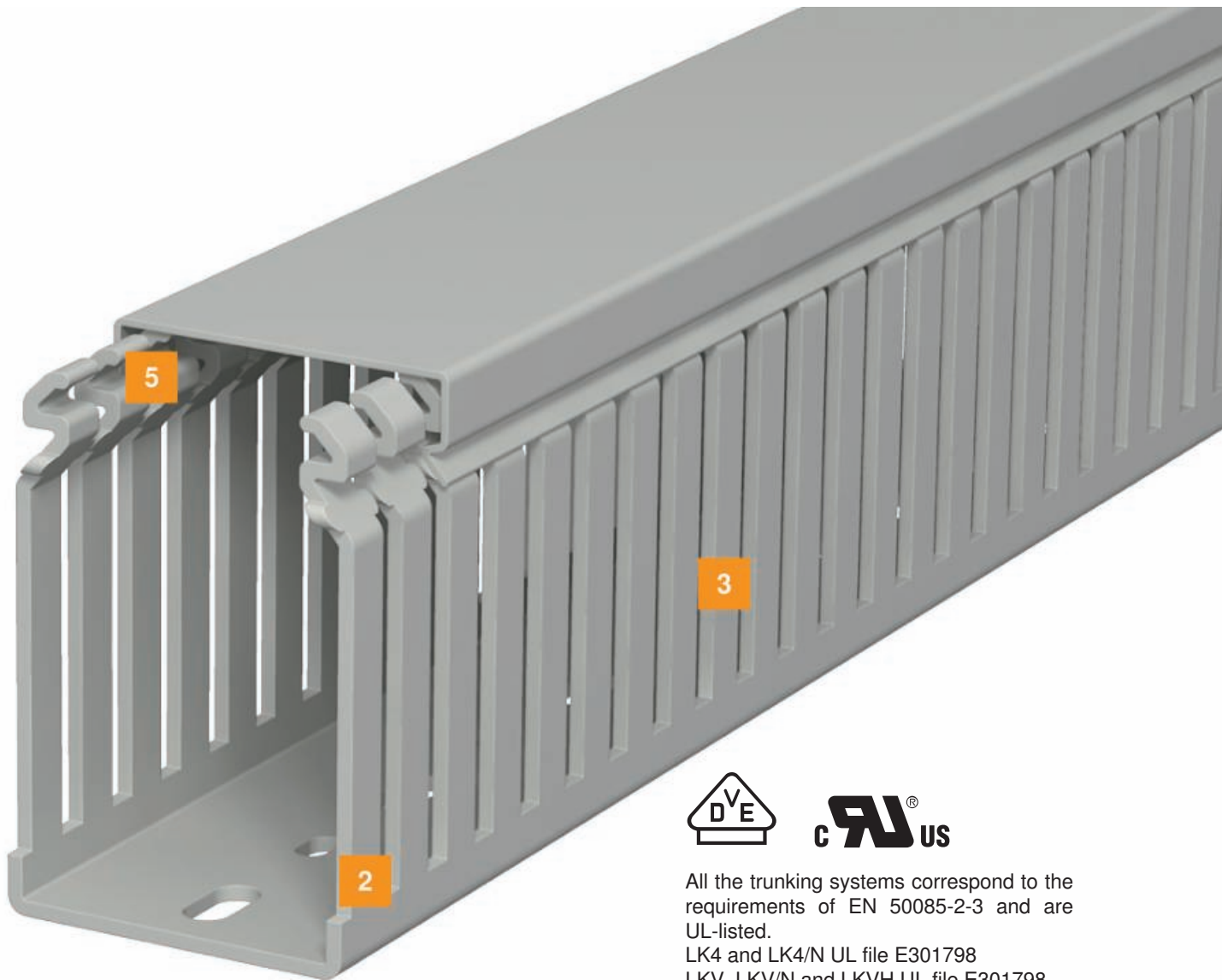
Special solutions

The starting dimension of the base perforation can be adjusted variably

- Available without base perforation
- Special lengths
- Special colours



1	Stable trunking with high-quality thicknesses
2	Exact predetermined breaking points in the strut and base area
3	Soft, burr-free slot, rounded tabs
4	Absolute dimensional accuracy of the side perforation and base perforation
5	Cut edges rounded and deburred in the closing area
6	Secure positioning of the covers through optimum closing contours
7	Wire retaining lug, allowing wiring without wire retaining brackets and preventing previously run-out wires from falling out



All the trunking systems correspond to the requirements of EN 50085-2-3 and are UL-listed.

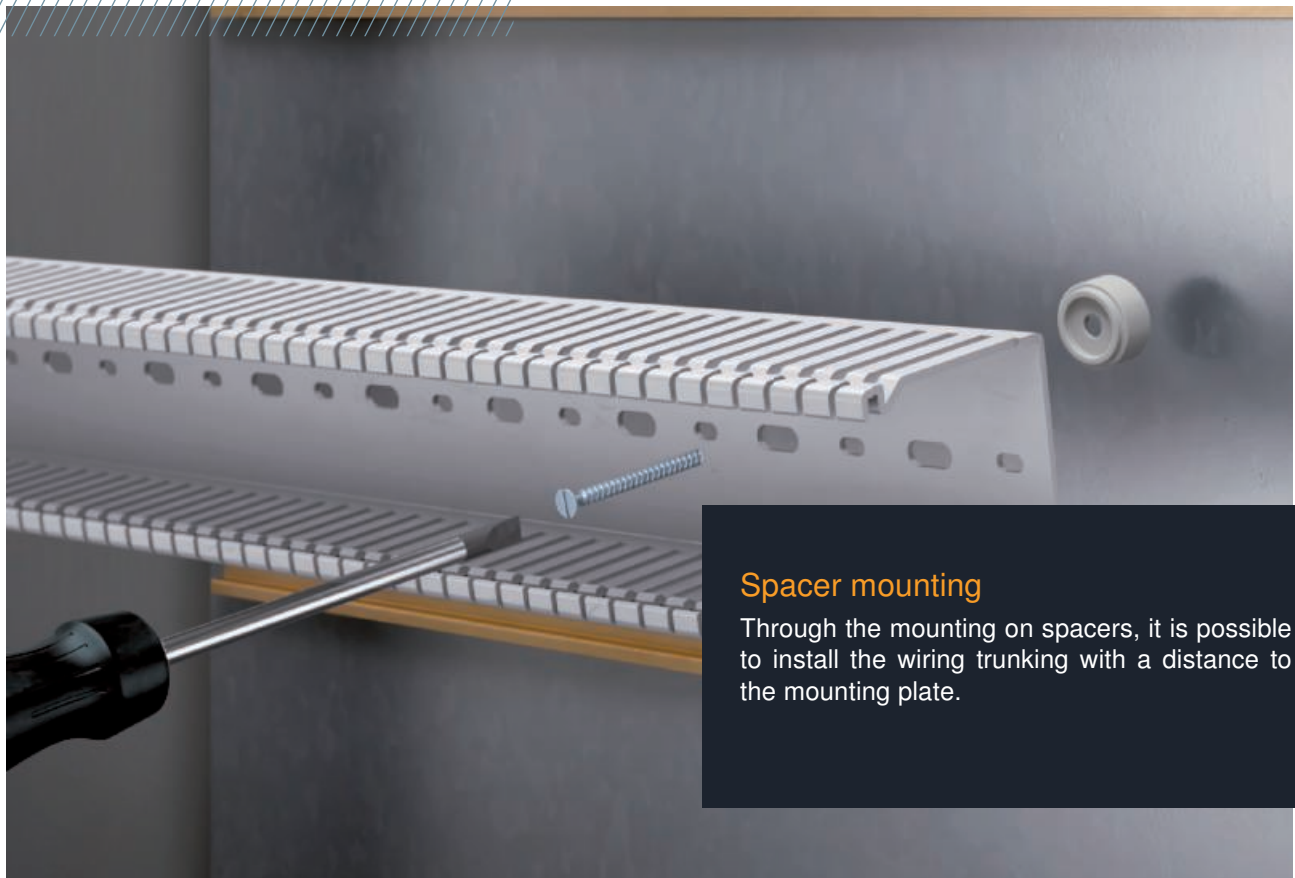
LK4 and LK4/N UL file E301798
 LKV, LKV/N and LKVH UL file E301798
 LK4H UL ML file E523202

Mounting benefits



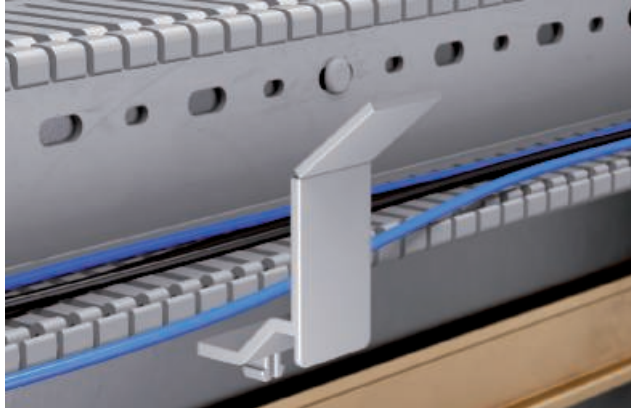
Mounting of the wiring trunking

The wiring trunking is fastened to the mounting plate of the switchgear cabinet using spreading rivets. The spreading rivets are installed using the plastic riveting tool.



Spacer mounting

Through the mounting on spacers, it is possible to install the wiring trunking with a distance to the mounting plate.



Wire retainers

The wire retainers can be adjusted according to the trunking width. To do this, simply break off the wire retainer at the predetermined breaking points. This means that just one wire retainer is necessary for any trunking width.



Wire retainer mounting

The wire retainer is inserted into the side slot of the wiring trunking. This simplifies cable installation and keeps the cables in place in the wiring trunking. It also guarantees easy attachment of the cover. If installations are required at a later date, then, when the cover is removed, the cables are held in the trunking and do not fall out.



Base perforation

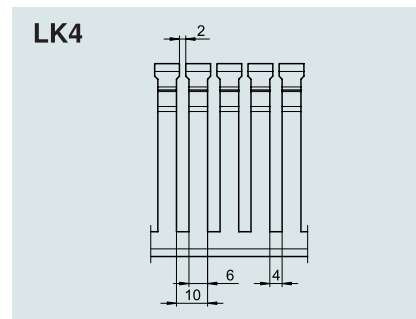
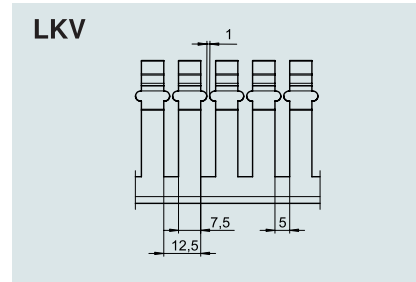
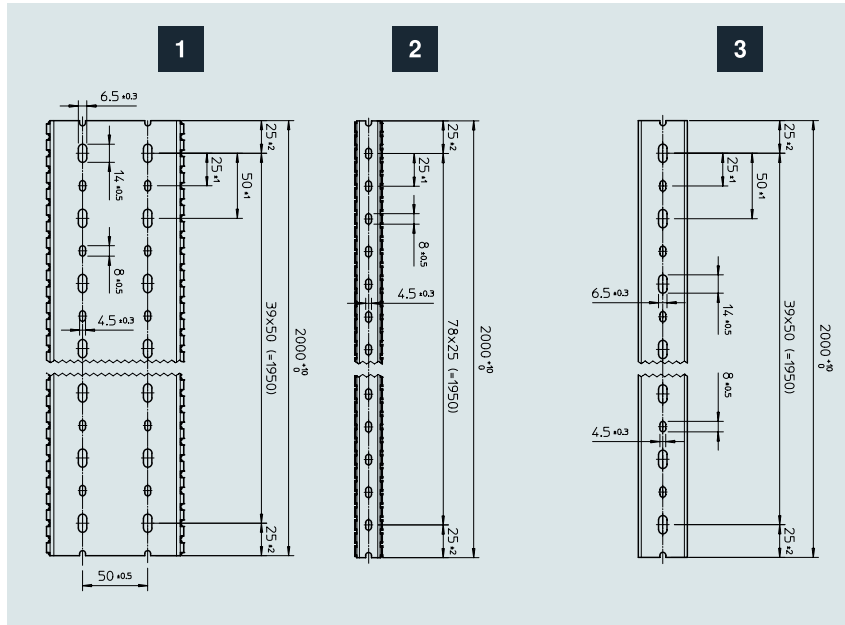
Single and dual-track base perforation to EN 50085-2-3 enable precise work.



Identification plate

Sticker as an identification plate to attach onto wiring trunking in switchgear cabinets with self-protected power circuits.

Hole patterns and dimensions



All the VK and VKH wiring trunking always start and finish – with regards to one delivery length (2,000 mm) – with half a small fastening hole (4.5 x 8 mm).

LK4/LK4/N	Item no.	Hole pattern
LK4 15015	6178001	2
LK4 30015	6178003	2
LK4 30025	6178005	3
LK4 40025	6178010	3
LK4 40040	6178012	3
LK4 40060	6178014	3
LK4 40080	6178016	1
LK4 40100	6178018	1
LK4 60015	6178026	2
LK4/N 60015	6178201	2
LK4 60025	6178028	3
LK4/N 60025	6178203	3
LK4 60040	6178031	3
LK4/N 60040	6178205	3
LK4 60060	6178033	3
LK4/N 60060	6178207	3
LK4 60080	6178035	1
LK4/N 60080	6178209	1
LK4 60100	6178037	1
LK4/N 60100	6178211	1
LK4 60120	6178039	1
LK4/N 60120	6178213	1

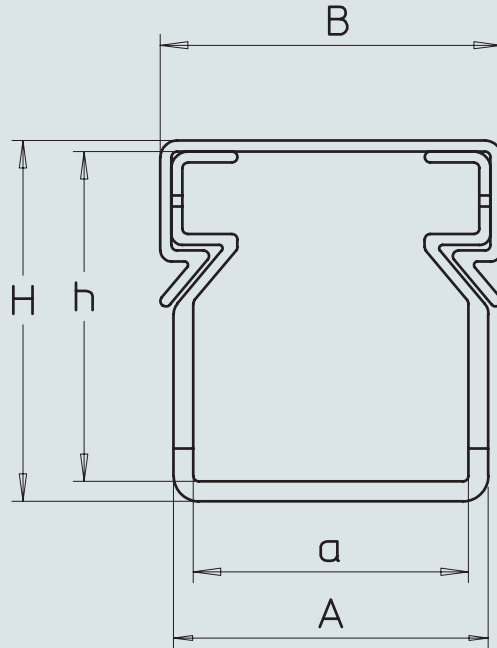
LK4/LK4/N	Item no.	Hole pattern
LK4 80025	6178050	3
LK4/N 80025	6178225	3
LK4 80040	6178052	3
LK4/N 80040	6178227	3
LK4 80060	6178054	3
LK4/N 80060	6178229	3
LK4 80080	6178056	1
LK4/N 80080	6178231	1
LK4 80100	6178059	1
LK4/N 80100	6178233	1
LK4/N 80120	6178236	1
LK4/N 80120	6178236	1
LK4/N 80120	6178236	1

LKV/H	Item no.	Hole pattern
LKVH 50037	6178612	3
LKV/H 50050	6178614	3
LKV/H 50075	6178616	1
LKVH N 75037	6178622	3
LKV/H 75050	6178624	3
LKV/H 75075	6178626	1
LKV/H 75100	6178628	1
LKV/H 75125	6178630	1

LKV/LKV/N	Item no.	Hole pattern
LKV 25025	6178302	3
LKV 37025	6178305	3
LKV 37037	6178307	3
LKV 50025	6178310	3
LKV 50037	6178312	3
LKV 50050	6178314	3
LKV 50075	6178316	1

LKV/LKV/N	Item no.	Hole pattern
LKV 75025	6178320	3
LKV/N 75025	6178420	3
LKV 75037	6178322	3
LKV/N 75037	6178422	3
LKV 75050	6178324	3
LKV/N 75050	6178424	3
LKV 75075	6178326	1
LKV/N 75075	6178426	1
LKV 75100	6178328	1
LKV/N 75100	6178428	1
LKV 75125	6178330	1
LKV/N 75125	6178430	1
LKV 10037	6178334	3
LKV/N 10037	6178435	3
LKV 10050	6178336	3
LKV/N 10050	6178437	3
LKV 10075	6178338	1
LKV/N 10075	6178439	1
LKV 100100	6178341	1

Dimensions, LK4 wiring trunking

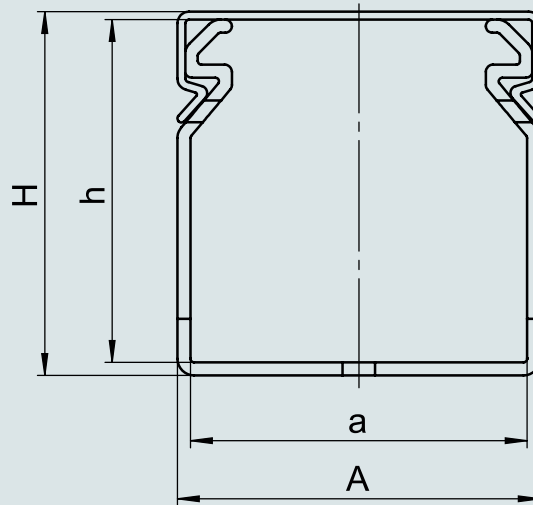


LK4- Nominal dimension = Internal dimension

Dimensions LK4

Item no.	Type	Item no.	Type	Dimension a mm	Dimension A mm	Dimension B mm	Dimension h mm	Dimension H mm
6178001	LK4 15015			15	17	20	15	17
6178003	LK4 30015			15	17.8	20	30	32.4
6178005	LK4 30025			25	28.6	31	30	32.8
6178010	LK4 40025			25	28.6	31	40	42.8
6178012	LK4 40040			40	43.6	46.2	40	43
6178014	LK4 40060			60	64	66.4	40	43.2
6178016	LK4 40080			80	84	87	40	43.5
6178018	LK4 40100			100	104	107.4	40	43.7
6178026	LK4 60015	6178201	LK4 N 60015	15	18.6	20	60	62.8
6178028	LK4 60025	6178203	LK4 N 60025	25	29	31	60	63
6178031	LK4 60040	6178205	LK4 N 60040	40	44	46.2	60	63
6178033	LK4 60060	6178207	LK4 N 60060	60	64	66.4	60	63.2
6178035	LK4 60080	6178209	LK4 N 60080	80	84.4	87	60	63.7
6178037	LK4 60100	6178211	LK4 N 60100	100	104.6	107.4	60	64
6178039	LK4 60120	6178213	LK4 N 60120	120	124.6	127.8	60	64.2
6178050	LK4 80025	6178225	LK4 N 80025	25	29.4	31	80	83.2
6178052	LK4 80040	6178227	LK4 N 80040	40	44.4	46.2	80	83.3
6178054	LK4 80060	6178229	LK4 N 80060	60	64.4	66.4	80	83.4
6178056	LK4 80080	6178231	LK4 N 80080	80	84.6	87	80	83.9
6178059	LK4 80100	6178233	LK4 N 80100	100	104.8	107.4	80	84.1
6178061	LK4 80120	6178236	LK4 N 80120	120	124.8	127.8	80	84.3

Dimensions, LKV and LKVH wiring trunking

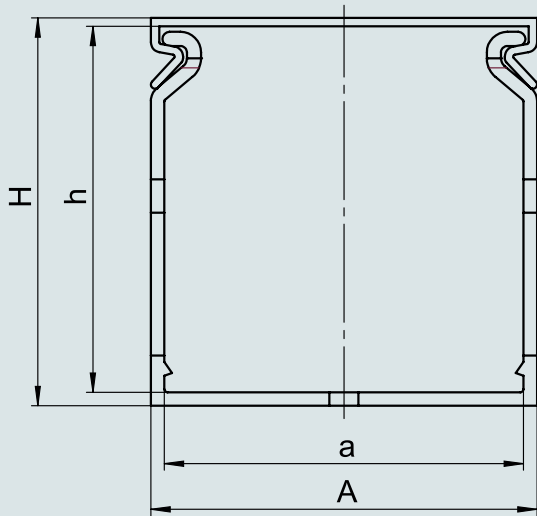


LKV- LKVH- Nominal dimension = External dimension

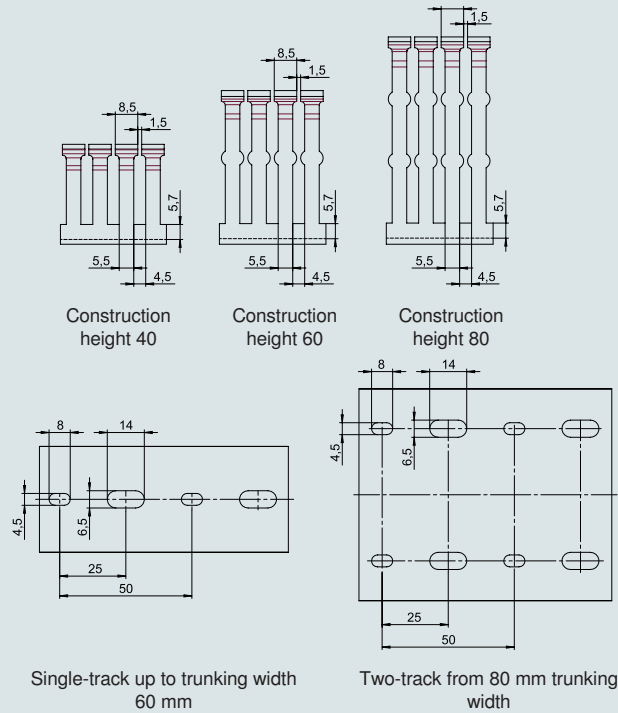
Dimensions, LKV

Item no.	Type	Item no.	Type	Dimension a mm	Dimension A mm	Dimension h mm	Dimension H mm
6178302	LKV 25025			21.4	25.0	22.2	25.0
6178305	LKV 37025			21.4	25.0	34.7	1.3
6178307	LKV 37037			33.9	1.3	34.7	1.3
6178310	LKV 50025			21.4	25.0	47.2	50.0
6178312	LKV 50037			33.9	1.3	47.2	50.0
6178314	LKV 50050			46.4	50.0	47.3	50.1
6178316	LKV 50075			71.0	75.0	47.2	50.6
6178320	LKV 75025	6178420	LKV N 75025	21.0	25.0	71.4	74.4
6178322	LKV 75037	6178422	LKV N 75037	33.3	1.3	71.4	74.5
6178324	LKV 75050	6178424	LKV N 75050	45.6	50.0	71.4	74.7
6178326	LKV 75075	6178426	LKV N 75075	70.6	75.0	71.4	75.0
6178328	LKV 75100	6178428	LKV N 75100	95.2	100.0	71.4	75.5
6178330	LKV 75125	6178430	LKV N 75125	120.2	125.0	71.4	75.6
6178334	LKV 10037	6178435	LKV N 10037	33.1	1.3	96.2	99.4
6178336	LKV 10050	6178437	LKV N 10050	45.6	50.0	96.2	99.5
6178338	LKV 10075	6178439	LKV N 10075	70.2	75.0	96.2	100.0
6178341	LKV 100100	6178441	LKV N 100100	95.2	100.0	96.2	100.3

Dimensions, LK4H (N) wiring trunking



LK4H- Nominal dimension = External dimension



Dimensions, LK4H

Item no.	Type	Dimension a mm	Dimension A mm	Dimension h mm	Dimension H mm
6132540	LK4H 30030	26.6	30.0	27.5	30.4
6132544	LK4H 40025	21.6	25.0	37.6	40.5
6132546	LK4H 40040	36.4	40.0	37.4	40.5
6132548	LK4H 40060	56.2	60.0	37.3	40.5
6132550	LK4H N 60025	21.2	25.0	57.5	60.6
6132552	LK4H N 60040	36.2	40.0	57.1	60.3
6132554	LK4H N 60060	55.8	60.0	56.9	60.3
6132556	LK4H N 60080	75.8	80.0	56.8	60.3
6132560	LK4H N 80025	20.8	25.0	76.7	80.0
6132562	LK4H N 80040	35.8	40.0	76.6	80.0
6132564	LK4H N 80060	55.6	60.0	76.5	80.0
6132566	LK4H N 80080	75.4	80.0	76.3	80.0
6132568	LK4H N 80100	95.4	100.0	76.2	80.0
6132569	LK4H N 80120	115.2	120.0	76.4	80.0
6132570	LK4H N 10040	35.4	40.0	96.9	100.5
6132572	LK4H N 10060	55.6	60.0	96.8	100.3
6132574	LK4H N 10080	75.4	80.0	96.6	100.3
6132576	LK4H N 100100	95.2	100.0	96.4	100.3

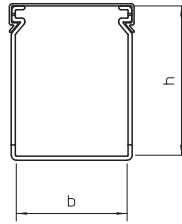
LK4 wiring trunking system

PVC

Type	Colour	Length mm	Dimension W x H mm		Pack m	Weight kg/100 m	Item no.
			W	H			
LK4 15015	Stone grey	2000	15	15	2	12.000	6178001

Wiring duct, incl. cover and base perforation, for horizontal and vertical routing of electrical cables in the switchgear cabinet. Designed as a metric duct. The nominal dimension of the system size corresponds to the internal dimension of the duct. Retainers are broken out without tools. The flush-floor routing of cables is possible through predetermined break points. Tested to DIN EN 50085-2-3. Special lengths on request.

Wiring trunking, type LK4 15015

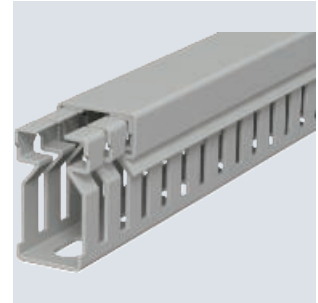
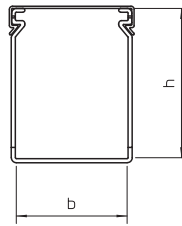


PVC

Type	Colour	Length mm	Dimension W x H mm		Pack m	Weight kg/100 m	Item no.
			W	H			
LK4 30015	Stone grey	2000	15	30	2	18.000	6178003

Wiring duct, incl. cover and base perforation, for horizontal and vertical routing of electrical cables in the switchgear cabinet. Designed as a metric duct. The nominal dimension of the system size corresponds to the internal dimension of the duct. Retainers are broken out without tools. The flush-floor routing of cables is possible through predetermined break points. Tested to DIN EN 50085-2-3. Special lengths on request.

Wiring trunking, type LK4 30015

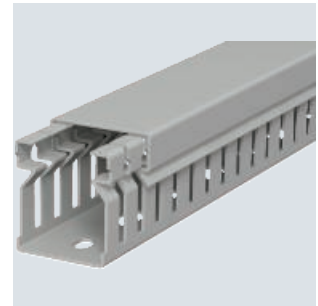
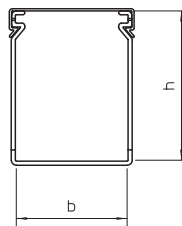


PVC

Type	Colour	Length mm	Dimension W x H mm		Pack m	Weight kg/100 m	Item no.
			W	H			
LK4 30025	Stone grey	2000	25	30	2	28.000	6178005

Wiring duct, incl. cover and base perforation, for horizontal and vertical routing of electrical cables in the switchgear cabinet. Designed as a metric duct. The nominal dimension of the system size corresponds to the internal dimension of the duct. Retainers are broken out without tools. The flush-floor routing of cables is possible through predetermined break points. Tested to DIN EN 50085-2-3. Special lengths on request.

Wiring trunking, type LK4 30025

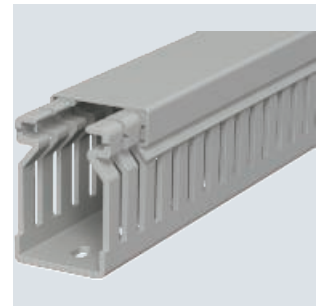
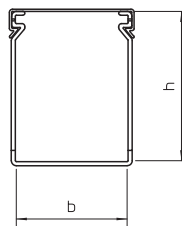


PVC

Type	Colour	Length mm	Dimension W x H mm		Pack m	Weight kg/100 m	Item no.
			W	H			
LK4 40025	Stone grey	2000	25	40	2	36.500	6178010

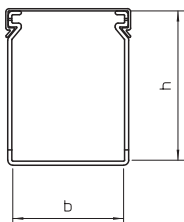
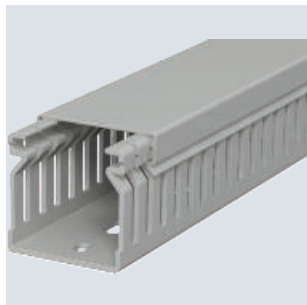
Wiring duct, incl. cover and base perforation, for horizontal and vertical routing of electrical cables in the switchgear cabinet. Designed as a metric duct. The nominal dimension of the system size corresponds to the internal dimension of the duct. Retainers are broken out without tools. The flush-floor routing of cables is possible through predetermined break points. Tested to DIN EN 50085-2-3. Special lengths on request.

Wiring trunking, type LK4 40025



Wiring trunking, type LK4 40040

PVC

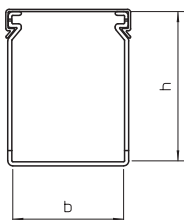
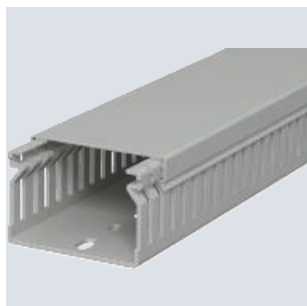


Type	Colour	Length mm	Dimension		Pack m	Weight		Item no.
			W x H mm			m	kg/100 m	
LK4 40040	Stone grey	2000	40x40		2	44.000		6178012

Wiring duct, incl. cover and base perforation, for horizontal and vertical routing of electrical cables in the switchgear cabinet. Designed as a metric duct. The nominal dimension of the system size corresponds to the internal dimension of the duct. Retainers are broken out without tools. The flush-floor routing of cables is possible through predetermined break points. Tested to DIN EN 50085-2-3. Special lengths on request.

Wiring trunking, type LK4 40060

PVC

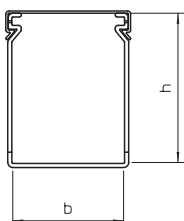
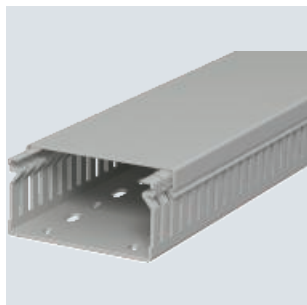


Type	Colour	Length mm	Dimension		Pack m	Weight		Item no.
			W x H mm			m	kg/100 m	
LK4 40060	Stone grey	2000	60x40		2	57.000		6178014

Wiring duct, incl. cover and base perforation, for horizontal and vertical routing of electrical cables in the switchgear cabinet. Designed as a metric duct. The nominal dimension of the system size corresponds to the internal dimension of the duct. Retainers are broken out without tools. The flush-floor routing of cables is possible through predetermined break points. Tested to DIN EN 50085-2-3. Special lengths on request.

Wiring trunking, type LK4 40080

PVC

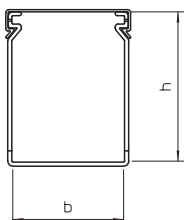
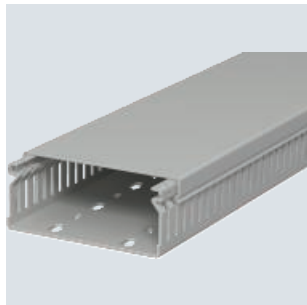


Type	Colour	Length mm	Dimension		Pack m	Weight		Item no.
			W x H mm			m	kg/100 m	
LK4 40080	Stone grey	2000	80x40		2	71.000		6178016

Wiring duct, incl. cover and base perforation, for horizontal and vertical routing of electrical cables in the switchgear cabinet. Designed as a metric duct. The nominal dimension of the system size corresponds to the internal dimension of the duct. Retainers are broken out without tools. The flush-floor routing of cables is possible through predetermined break points. Tested to DIN EN 50085-2-3. Special lengths on request.

Wiring trunking, type LK4 40100

PVC



Type	Colour	Length mm	Dimension		Pack m	Weight		Item no.
			W x H mm			m	kg/100 m	
LK4 40100	Stone grey	2000	100x40		2	85.500		6178018

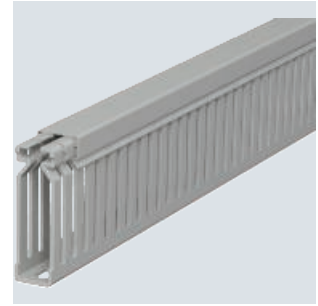
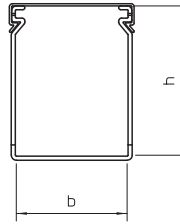
Wiring duct, incl. cover and base perforation, for horizontal and vertical routing of electrical cables in the switchgear cabinet. Designed as a metric duct. The nominal dimension of the system size corresponds to the internal dimension of the duct. Retainers are broken out without tools. The flush-floor routing of cables is possible through predetermined break points. Tested to DIN EN 50085-2-3. Special lengths on request.

PVC

Type	Colour	Length mm	Dimension W x H mm		Pack m	Weight kg/100 m	Item no.
			W	H			
LK4 60015	Stone grey	2000	15	60	2	32.500	6178026

Wiring duct, incl. cover and base perforation, for horizontal and vertical routing of electrical cables in the switchgear cabinet. Designed as a metric duct. The nominal dimension of the system size corresponds to the internal dimension of the duct. Retainers are broken out without tools. The flush-floor routing of cables is possible through predetermined break points. Tested to DIN EN 50085-2-3. Special lengths on request.

Wiring trunking, type LK4 60015

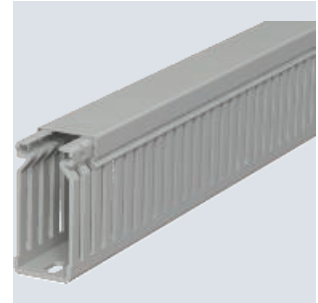
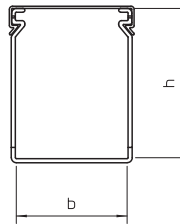


PVC

Type	Colour	Length mm	Dimension W x H mm		Pack m	Weight kg/100 m	Item no.
			W	H			
LK4 60025	Stone grey	2000	25	60	2	46.000	6178028

Wiring duct, incl. cover and base perforation, for horizontal and vertical routing of electrical cables in the switchgear cabinet. Designed as a metric duct. The nominal dimension of the system size corresponds to the internal dimension of the duct. Retainers are broken out without tools. The flush-floor routing of cables is possible through predetermined break points. Tested to DIN EN 50085-2-3. Special lengths on request.

Wiring trunking, type LK4 60025

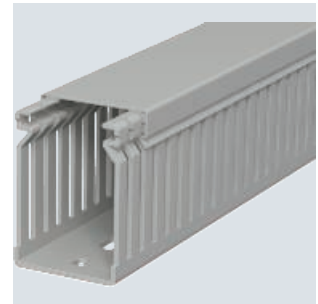
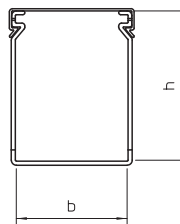


PVC

Type	Colour	Length mm	Dimension W x H mm		Pack m	Weight kg/100 m	Item no.
			W	H			
LK4 60040	Stone grey	2000	40	60	2	53.500	6178031

Wiring duct, incl. cover and base perforation, for horizontal and vertical routing of electrical cables in the switchgear cabinet. Designed as a metric duct. The nominal dimension of the system size corresponds to the internal dimension of the duct. Retainers are broken out without tools. The flush-floor routing of cables is possible through predetermined break points. Tested to DIN EN 50085-2-3. Special lengths on request.

Wiring trunking, type LK4 60040

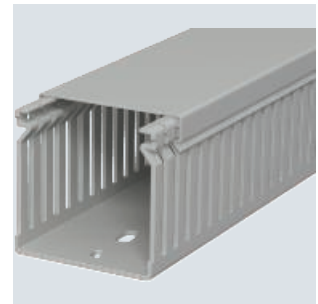
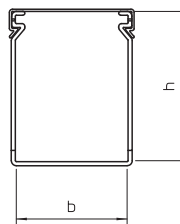


PVC

Type	Colour	Length mm	Dimension W x H mm		Pack m	Weight kg/100 m	Item no.
			W	H			
LK4 60060	Stone grey	2000	60	60	2	64.500	6178033

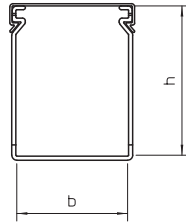
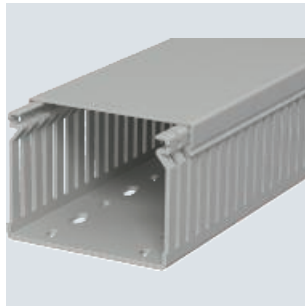
Wiring duct, incl. cover and base perforation, for horizontal and vertical routing of electrical cables in the switchgear cabinet. Designed as a metric duct. The nominal dimension of the system size corresponds to the internal dimension of the duct. Retainers are broken out without tools. The flush-floor routing of cables is possible through predetermined break points. Tested to DIN EN 50085-2-3. Special lengths on request.

Wiring trunking, type LK4 60060



Wiring trunking, type LK4 60080

PVC

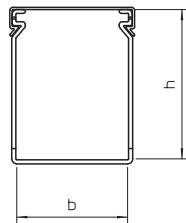
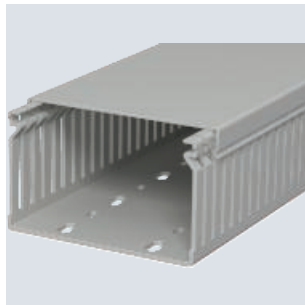


Type	Colour	Length mm	Dimension		Pack m	Weight		Item no.
			W x H mm			m	kg/100 m	
LK4 60080	Stone grey	2000	80x60		2	82.500		6178035

Wiring duct, incl. cover and base perforation, for horizontal and vertical routing of electrical cables in the switchgear cabinet. Designed as a metric duct. The nominal dimension of the system size corresponds to the internal dimension of the duct. Retainers are broken out without tools. The flush-floor routing of cables is possible through predetermined break points. Tested to DIN EN 50085-2-3. Special lengths on request.

Wiring trunking, type LK4 60100

PVC

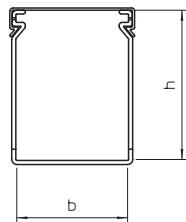
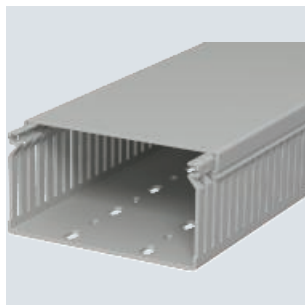


Type	Colour	Length mm	Dimension		Pack m	Weight		Item no.
			W x H mm			m	kg/100 m	
LK4 60100	Stone grey	2000	100x60		2	100.000		6178037

Wiring duct, incl. cover and base perforation, for horizontal and vertical routing of electrical cables in the switchgear cabinet. Designed as a metric duct. The nominal dimension of the system size corresponds to the internal dimension of the duct. Retainers are broken out without tools. The flush-floor routing of cables is possible through predetermined break points. Tested to DIN EN 50085-2-3. Special lengths on request.

Wiring trunking, type LK4 60120

PVC

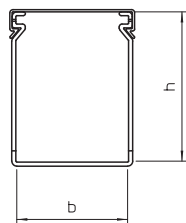


Type	Colour	Length mm	Dimension		Pack m	Weight		Item no.
			W x H mm			m	kg/100 m	
LK4 60120	Stone grey	2000	120x60		2	117.000		6178039

Wiring duct, incl. cover and base perforation, for horizontal and vertical routing of electrical cables in the switchgear cabinet. Designed as a metric duct. The nominal dimension of the system size corresponds to the internal dimension of the duct. Retainers are broken out without tools. The flush-floor routing of cables is possible through predetermined break points. Tested to DIN EN 50085-2-3. Special lengths on request.

Wiring trunking, type LK4 80025

PVC



Type	Colour	Length mm	Dimension		Pack m	Weight		Item no.
			W x H mm			m	kg/100 m	
LK4 80025	Stone grey	2000	25x80		2	61.000		6178050

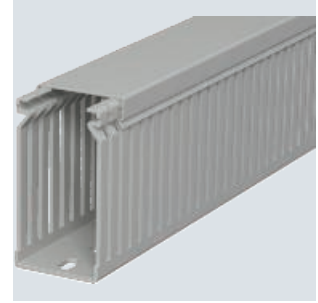
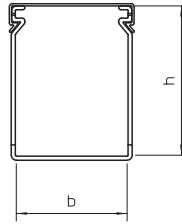
Wiring duct, incl. cover and base perforation, for horizontal and vertical routing of electrical cables in the switchgear cabinet. Designed as a metric duct. The nominal dimension of the system size corresponds to the internal dimension of the duct. Retainers are broken out without tools. The flush-floor routing of cables is possible through predetermined break points. Tested to DIN EN 50085-2-3. Special lengths on request.

PVC

Type	Colour	Length mm	Dimension W x H mm		Pack m	Weight kg/100 m	Item no.
			W	H			
LK4 80040	Stone grey	2000	40	80	2	64.500	6178052

Wiring duct, incl. cover and base perforation, for horizontal and vertical routing of electrical cables in the switchgear cabinet. Designed as a metric duct. The nominal dimension of the system size corresponds to the internal dimension of the duct. Retainers are broken out without tools. The flush-floor routing of cables is possible through predetermined break points. Tested to DIN EN 50085-2-3. Special lengths on request.

Wiring trunking, type LK4 80040

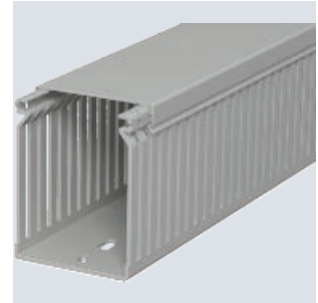
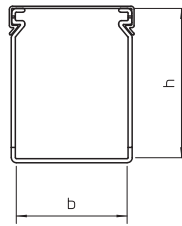


PVC

Type	Colour	Length mm	Dimension W x H mm		Pack m	Weight kg/100 m	Item no.
			W	H			
LK4 80060	Stone grey	2000	60	80	2	76.000	6178054

Wiring duct, incl. cover and base perforation, for horizontal and vertical routing of electrical cables in the switchgear cabinet. Designed as a metric duct. The nominal dimension of the system size corresponds to the internal dimension of the duct. Retainers are broken out without tools. The flush-floor routing of cables is possible through predetermined break points. Tested to DIN EN 50085-2-3. Special lengths on request.

Wiring trunking, type LK4 80060

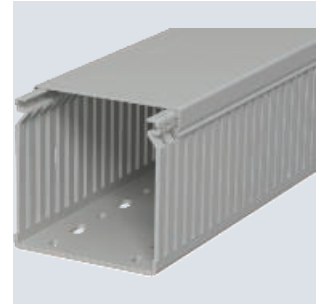
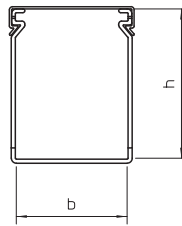


PVC

Type	Colour	Length mm	Dimension W x H mm		Pack m	Weight kg/100 m	Item no.
			W	H			
LK4 80080	Stone grey	2000	80	80	2	95.500	6178056

Wiring duct, incl. cover and base perforation, for horizontal and vertical routing of electrical cables in the switchgear cabinet. Designed as a metric duct. The nominal dimension of the system size corresponds to the internal dimension of the duct. Retainers are broken out without tools. The flush-floor routing of cables is possible through predetermined break points. Tested to DIN EN 50085-2-3. Special lengths on request.

Wiring trunking, type LK4 80080

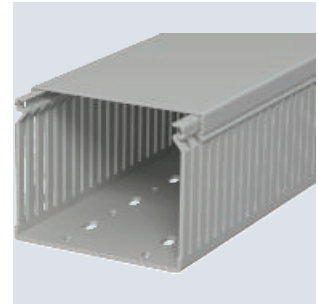
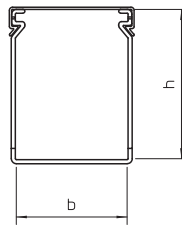


PVC

Type	Colour	Length mm	Dimension W x H mm		Pack m	Weight kg/100 m	Item no.
			W	H			
LK4 80100	Stone grey	2000	100	80	2	111.500	6178059

Wiring duct, incl. cover and base perforation, for horizontal and vertical routing of electrical cables in the switchgear cabinet. Designed as a metric duct. The nominal dimension of the system size corresponds to the internal dimension of the duct. Retainers are broken out without tools. The flush-floor routing of cables is possible through predetermined break points. Tested to DIN EN 50085-2-3. Special lengths on request.

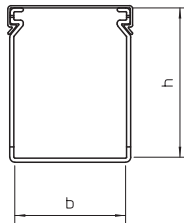
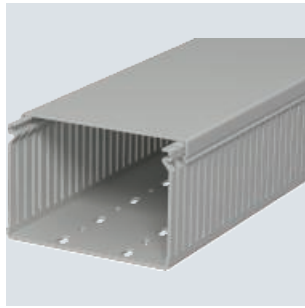
Wiring trunking, type LK4 80100



LK4 wiring trunking

Wiring trunking, type LK4 80120

PVC



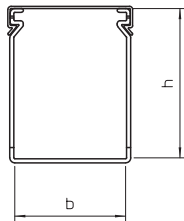
Type	Colour	Dimension		Pack	Weight		Item no.
		Length mm	W x H mm		m	kg/100 m	
LK4 80120	Stone grey	2000	120x80	2	128.500	6178061	

Wiring duct, incl. cover and base perforation, for horizontal and vertical routing of electrical cables in the switchgear cabinet. Designed as a metric duct. The nominal dimension of the system size corresponds to the internal dimension of the duct. Retainers are broken out without tools. The flush-floor routing of cables is possible through predetermined break points. Tested to DIN EN 50085-2-3. Special lengths on request.

LK4/N wiring trunking

Wiring trunking, type LK4/N 60015

PVC

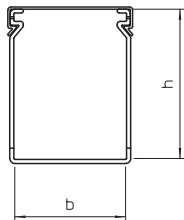


Type	Colour	Dimension		Pack	Weight		Item no.
		Length mm	W x H mm		m	kg/100 m	
LK4 N 60015	Stone grey	2000	15x60	2	41.000	6178201	

Wiring duct, incl. cover and base perforation, for horizontal and vertical routing of electrical cables in the switchgear cabinet. Designed as a metric duct. The nominal dimension of the system size corresponds to the internal dimension of the duct. Retainers are broken out without tools. The flush-floor routing of cables is possible through predetermined break points. Tapering in the side slots prevents the cables from falling out. Tested to DIN EN 50085-2-3. Special lengths on request.

Wiring trunking, type LK4/N 60025

PVC

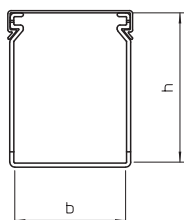
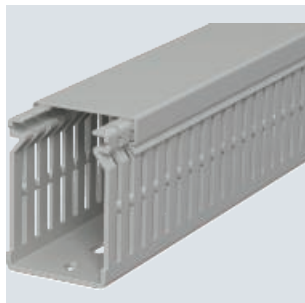


Type	Colour	Dimension		Pack	Weight		Item no.
		Length mm	W x H mm		m	kg/100 m	
LK4 N 60025	Stone grey	2000	25x60	2	48.500	6178203	

Wiring duct, incl. cover and base perforation, for horizontal and vertical routing of electrical cables in the switchgear cabinet. Designed as a metric duct. The nominal dimension of the system size corresponds to the internal dimension of the duct. Retainers are broken out without tools. The flush-floor routing of cables is possible through predetermined break points. Tapering in the side slots prevents the cables from falling out. Tested to DIN EN 50085-2-3. Special lengths on request.

Wiring trunking, type LK4/N 60040

PVC



Type	Colour	Dimension		Pack	Weight		Item no.
		Length mm	W x H mm		m	kg/100 m	
LK4 N 60040	Stone grey	2000	40x60	2	56.000	6178205	

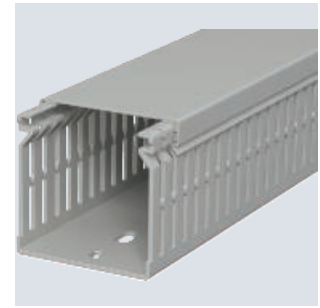
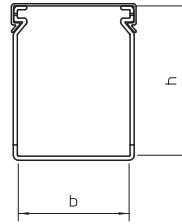
Wiring duct, incl. cover and base perforation, for horizontal and vertical routing of electrical cables in the switchgear cabinet. Designed as a metric duct. The nominal dimension of the system size corresponds to the internal dimension of the duct. Retainers are broken out without tools. The flush-floor routing of cables is possible through predetermined break points. Tapering in the side slots prevents the cables from falling out. Tested to DIN EN 50085-2-3. Special lengths on request.

PVC

Type	Colour	Length mm	Dimension W x H mm		Pack m	Weight kg/100 m	Item no.
			W	H			
LK4 N 60060	Stone grey	2000	60	60	2	68.000	6178207

Wiring duct, incl. cover and base perforation, for horizontal and vertical routing of electrical cables in the switchgear cabinet. Designed as a metric duct. The nominal dimension of the system size corresponds to the internal dimension of the duct. Retainers are broken out without tools. The flush-floor routing of cables is possible through predetermined break points. Tapering in the side slots prevents the cables from falling out. Tested to DIN EN 50085-2-3. Special lengths on request.

Wiring trunking, type LK4/N 60060

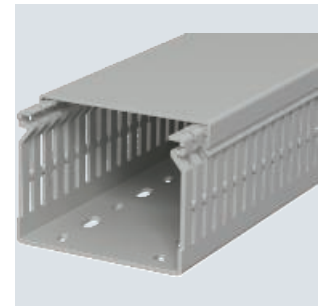
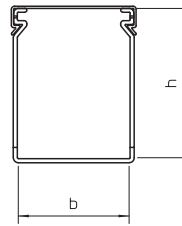


PVC

Type	Colour	Length mm	Dimension W x H mm		Pack m	Weight kg/100 m	Item no.
			W	H			
LK4 N 60080	Stone grey	2000	80	60	2	87.000	6178209

Wiring duct, incl. cover and base perforation, for horizontal and vertical routing of electrical cables in the switchgear cabinet. Designed as a metric duct. The nominal dimension of the system size corresponds to the internal dimension of the duct. Retainers are broken out without tools. The flush-floor routing of cables is possible through predetermined break points. Tapering in the side slots prevents the cables from falling out. Tested to DIN EN 50085-2-3. Special lengths on request.

Wiring trunking, type LK4/N 60080

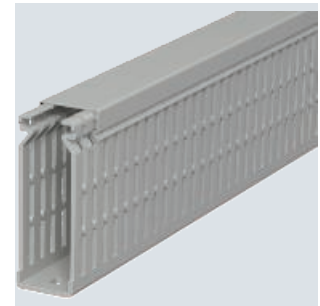
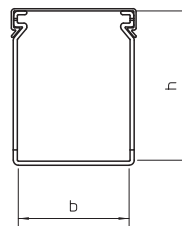


PVC

Type	Colour	Length mm	Dimension W x H mm		Pack m	Weight kg/100 m	Item no.
			W	H			
LK4 N 80025	Stone grey	2000	25	80	2	65.000	6178225

Wiring duct, incl. cover and base perforation, for horizontal and vertical routing of electrical cables in the switchgear cabinet. Designed as a metric duct. The nominal dimension of the system size corresponds to the internal dimension of the duct. Retainers are broken out without tools. The flush-floor routing of cables is possible through predetermined break points. Tapering in the side slots prevents the cables from falling out. Tested to DIN EN 50085-2-3. Special lengths on request.

Wiring trunking, type LK4/N 80025

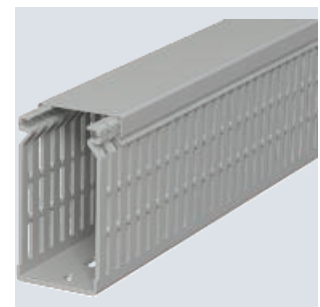
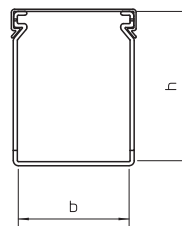


PVC

Type	Colour	Length mm	Dimension W x H mm		Pack m	Weight kg/100 m	Item no.
			W	H			
LK4 N 80040	Stone grey	2000	40	80	2	73.500	6178227

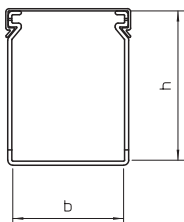
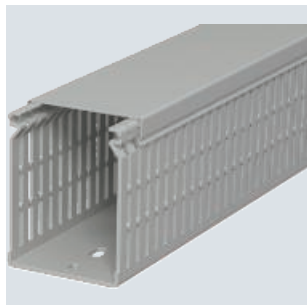
Wiring duct, incl. cover and base perforation, for horizontal and vertical routing of electrical cables in the switchgear cabinet. Designed as a metric duct. The nominal dimension of the system size corresponds to the internal dimension of the duct. Retainers are broken out without tools. The flush-floor routing of cables is possible through predetermined break points. Tapering in the side slots prevents the cables from falling out. Tested to DIN EN 50085-2-3. Special lengths on request.

Wiring trunking, type LK4/N 80040



Wiring trunking, type LK4/N 80060

PVC

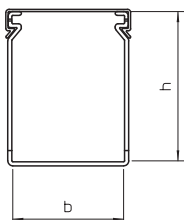
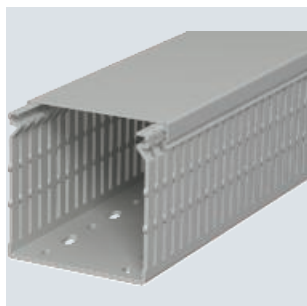


Type	Colour	Length mm	Dimension W x H mm		Pack m	Weight kg/100 m		Item no.
			mm	mm		m	kg/100 m	
LK4 N 80060	Stone grey	2000	60	80	2	82.000		6178229

Wiring duct, incl. cover and base perforation, for horizontal and vertical routing of electrical cables in the switchgear cabinet. Designed as a metric duct. The nominal dimension of the system size corresponds to the internal dimension of the duct. Retainers are broken out without tools. The flush-floor routing of cables is possible through predetermined break points. Tapering in the side slots prevents the cables from falling out. Tested to DIN EN 50085-2-3. Special lengths on request.

Wiring trunking, type LK4/N 80080

PVC

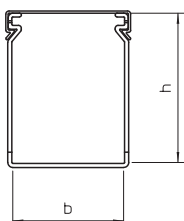
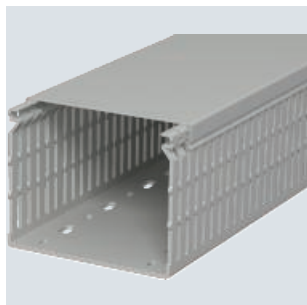


Type	Colour	Length mm	Dimension W x H mm		Pack m	Weight kg/100 m		Item no.
			mm	mm		m	kg/100 m	
LK4 N 80080	Stone grey	2000	80	80	2	101.000		6178231

Wiring duct, incl. cover and base perforation, for horizontal and vertical routing of electrical cables in the switchgear cabinet. Designed as a metric duct. The nominal dimension of the system size corresponds to the internal dimension of the duct. Retainers are broken out without tools. The flush-floor routing of cables is possible through predetermined break points. Tapering in the side slots prevents the cables from falling out. Tested to DIN EN 50085-2-3. Special lengths on request.

Wiring trunking, type LK4/N 80100

PVC

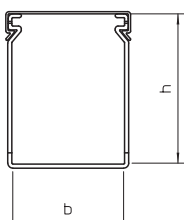
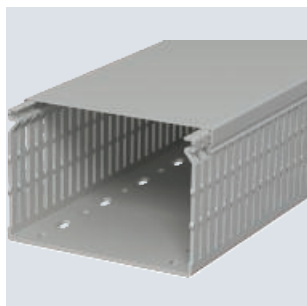


Type	Colour	Length mm	Dimension W x H mm		Pack m	Weight kg/100 m		Item no.
			mm	mm		m	kg/100 m	
LK4 N 80100	Stone grey	2000	100	80	2	116.500		6178233

Wiring duct, incl. cover and base perforation, for horizontal and vertical routing of electrical cables in the switchgear cabinet. Designed as a metric duct. The nominal dimension of the system size corresponds to the internal dimension of the duct. Retainers are broken out without tools. The flush-floor routing of cables is possible through predetermined break points. Tapering in the side slots prevents the cables from falling out. Tested to DIN EN 50085-2-3. Special lengths on request.

Wiring trunking, type LK4/N 80120

PVC



Type	Colour	Length mm	Dimension W x H mm		Pack m	Weight kg/100 m		Item no.
			mm	mm		m	kg/100 m	
LK4 N 80120	Stone grey	2000	120	80	2	133.500		6178236

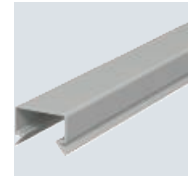
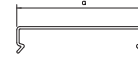
Wiring duct, incl. cover and base perforation, for horizontal and vertical routing of electrical cables in the switchgear cabinet. Designed as a metric duct. The nominal dimension of the system size corresponds to the internal dimension of the duct. Retainers are broken out without tools. The flush-floor routing of cables is possible through predetermined break points. Tapering in the side slots prevents the cables from falling out. Tested to DIN EN 50085-2-3. Special lengths on request.

PVC

Cover LK4 D 15

Type	Colour	Dim. a mm	Length mm	Pack m	Weight kg/100 m	Item no.
LK4 D 15	Stone grey	20	2000	2	8.500	6178480

Trunking cover for replacement requirements.

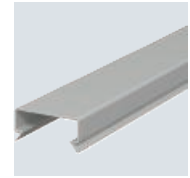


PVC

Cover LK4 D 25

Type	Colour	Dim. a mm	Length mm	Pack m	Weight kg/100 m	Item no.
LK4 D 25	Stone grey	31	2000	2	10.000	6178482

Trunking cover for replacement requirements.

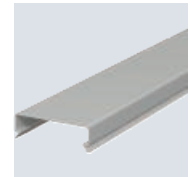
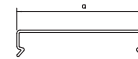


PVC

Cover LK4 D 40

Type	Colour	Dim. a mm	Length mm	Pack m	Weight kg/100 m	Item no.
LK4 D 40	Stone grey	46.2	2000	2	13.500	6178484

Trunking cover for replacement requirements.

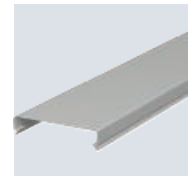
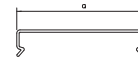


PVC

Cover LK4 D 60

Type	Colour	Dim. a mm	Length mm	Pack m	Weight kg/100 m	Item no.
LK4 D 60	Stone grey	66.4	2000	2	18.000	6178486

Trunking cover for replacement requirements.

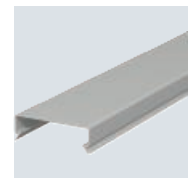
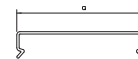


PVC

Cover LK4 D 80

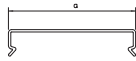
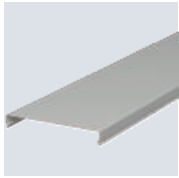
Type	Colour	Dim. a mm	Length mm	Pack m	Weight kg/100 m	Item no.
LK4 D 80	Stone grey	87	2000	2	27.000	6178488

Trunking cover for replacement requirements.



Cover LK4 D 100

PVC

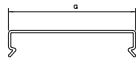
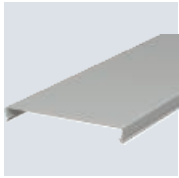


Type	Colour	Dim.		Pack	Weight	Item no.
		a	Length			
		mm	mm	m	kg/100 m	
LK4 D 100	Stone grey	107.4	2000	2	35.500	6178490

Trunking cover for replacement requirements.

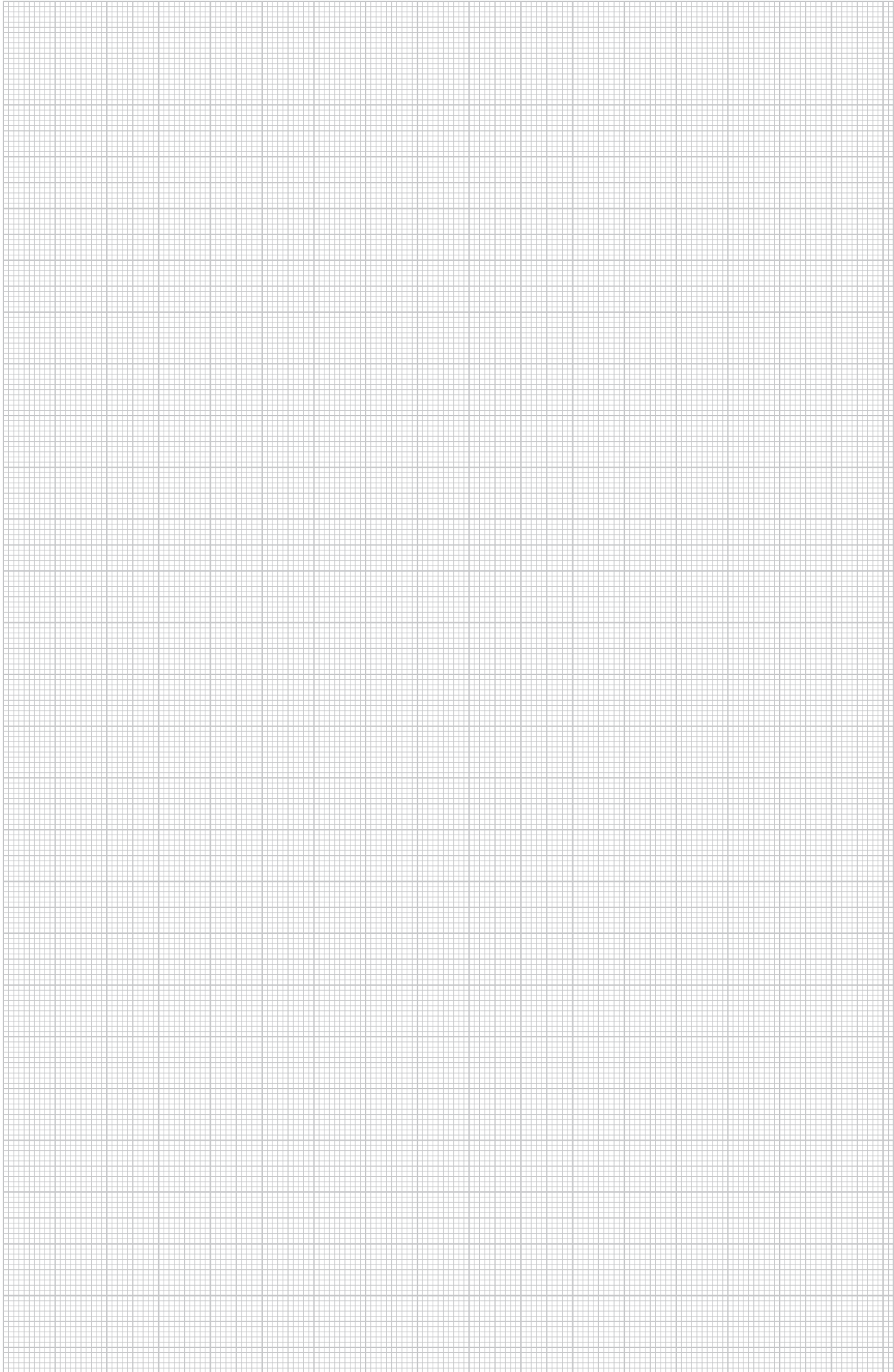
Cover LK4 D 120

PVC



Type	Colour	Dim.		Pack	Weight	Item no.
		a	Length			
		mm	mm	m	kg/100 m	
LK4 D 120	Stone grey	127.8	2000	2	45.500	6178492

Trunking cover for replacement requirements.



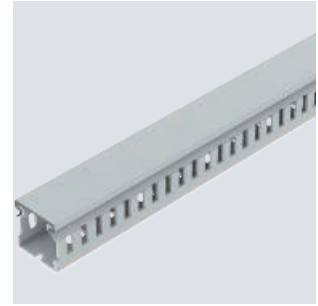
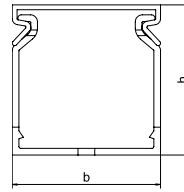
LK4H halogen-free wiring trunking system

PC / ABS

Type	Colour	Length mm	Width mm	Height mm	Pack m	Weight kg/100 m	Item no.
LK4H 30030	Light grey	2000	30	30	2	18.000	6132540

Halogen-free wiring duct, incl. cover and base perforation, for horizontal and vertical routing of electrical cables in the switchgear cabinet. With double-sided adhesive tape on the duct base as a mounting aid. Designed as a metric duct. Retainers are broken out without tools. Special lengths on request.

Wiring trunking, type LK4H 30030

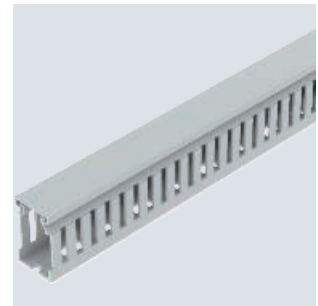
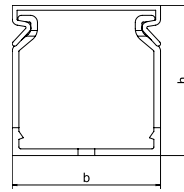


PC / ABS

Type	Colour	Length mm	Width mm	Height mm	Pack m	Weight kg/100 m	Item no.
LK4H 40025	Light grey	2000	25	40	2	21.000	6132544

Halogen-free wiring duct, incl. cover and base perforation, for horizontal and vertical routing of electrical cables in the switchgear cabinet. With double-sided adhesive tape on the duct base as a mounting aid. Designed as a metric duct. Retainers are broken out without tools. Special lengths on request.

Wiring trunking, type LK4H 40025

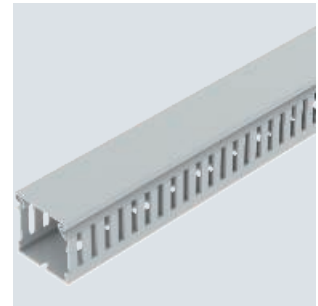
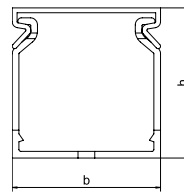


PC / ABS

Type	Colour	Length mm	Width mm	Height mm	Pack m	Weight kg/100 m	Item no.
LK4H 40040	Light grey	2000	40	40	2	50.000	6132546

Halogen-free wiring duct, incl. cover and base perforation, for horizontal and vertical routing of electrical cables in the switchgear cabinet. With double-sided adhesive tape on the duct base as a mounting aid. Designed as a metric duct. Retainers are broken out without tools. Special lengths on request.

Wiring trunking, type LK4H 40040

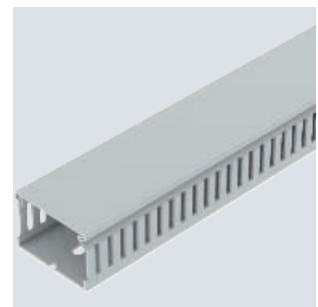
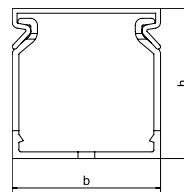


PC / ABS

Type	Colour	Length mm	Width mm	Height mm	Pack m	Weight kg/100 m	Item no.
LK4H 40060	Light grey	2000	60	40	2	35.000	6132548

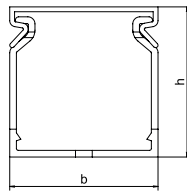
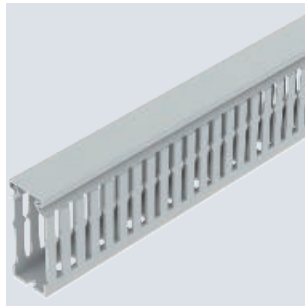
Halogen-free wiring duct, incl. cover and base perforation, for horizontal and vertical routing of electrical cables in the switchgear cabinet. With double-sided adhesive tape on the duct base as a mounting aid. Designed as a metric duct. Retainers are broken out without tools. Special lengths on request.

Wiring trunking, type LK4H 40060



Wiring trunking, type LK4H N 60025

PC/
ABS

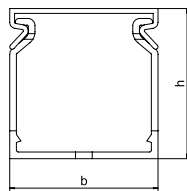
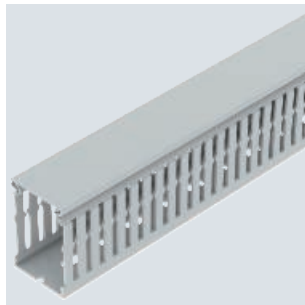


Type	Colour	Length mm	Width mm	Height mm	Pack m	Weight kg/100 m	Item no.
LK4H N 60025	Light grey	2000	25	60	2	26.000	6132550

Halogen-free wiring duct, incl. cover and base perforation, for horizontal and vertical routing of electrical cables in the switchgear cabinet. With double-sided adhesive tape on the duct base as a mounting aid. Designed as a metric duct. Retainers are broken out without tools. Special lengths on request.

Wiring trunking, type LK4H N 60040

PC/
ABS

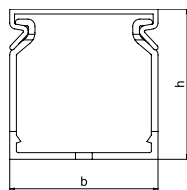
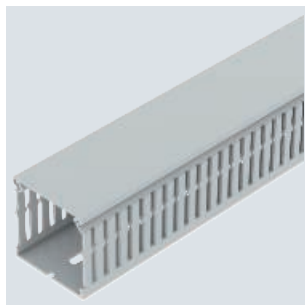


Type	Colour	Length mm	Width mm	Height mm	Pack m	Weight kg/100 m	Item no.
LK4H N 60040	Light grey	2000	40	60	2	35.000	6132552

Halogen-free wiring duct, incl. cover and base perforation, for horizontal and vertical routing of electrical cables in the switchgear cabinet. With double-sided adhesive tape on the duct base as a mounting aid. Designed as a metric duct. Retainers are broken out without tools. Special lengths on request.

Wiring trunking, type LK4H N 60060

PC/
ABS

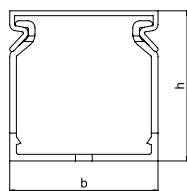
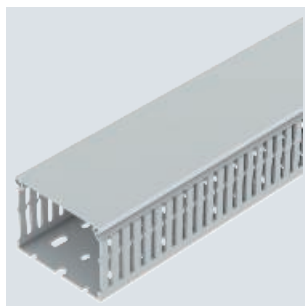


Type	Colour	Length mm	Width mm	Height mm	Pack m	Weight kg/100 m	Item no.
LK4H N 60060	Light grey	2000	60	60	2	42.000	6132554

Halogen-free wiring duct, incl. cover and base perforation, for horizontal and vertical routing of electrical cables in the switchgear cabinet. With double-sided adhesive tape on the duct base as a mounting aid. Designed as a metric duct. Retainers are broken out without tools. Special lengths on request.

Wiring trunking, type LK4H N 60080

PC/
ABS



Type	Colour	Length mm	Width mm	Height mm	Pack m	Weight kg/100 m	Item no.
LK4H N 60080	Light grey	2000	80	60	2	52.000	6132556

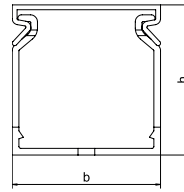
Halogen-free wiring duct, incl. cover and base perforation, for horizontal and vertical routing of electrical cables in the switchgear cabinet. With double-sided adhesive tape on the duct base as a mounting aid. Designed as a metric duct. Retainers are broken out without tools. Special lengths on request.

PC / ABS

Wiring trunking, type LK4H N 80025

Type	Colour	Length mm	Width mm	Height mm	Pack m	Weight kg/100 m	Item no.
LK4H N 80025	Light grey	2000	25	80	2	35.000	6132560

Halogen-free wiring duct, incl. cover and base perforation, for horizontal and vertical routing of electrical cables in the switchgear cabinet. With double-sided adhesive tape on the duct base as a mounting aid. Designed as a metric duct. Retainers are broken out without tools. Special lengths on request.

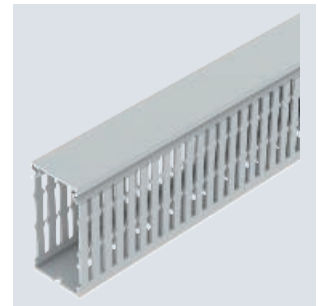
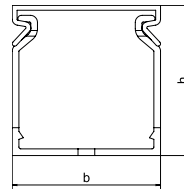


PC / ABS

Wiring trunking, type LK4H N 80040

Type	Colour	Length mm	Width mm	Height mm	Pack m	Weight kg/100 m	Item no.
LK4H N 80040	Light grey	2000	40	80	2	43.000	6132562

Halogen-free wiring duct, incl. cover and base perforation, for horizontal and vertical routing of electrical cables in the switchgear cabinet. With double-sided adhesive tape on the duct base as a mounting aid. Designed as a metric duct. Retainers are broken out without tools. Special lengths on request.

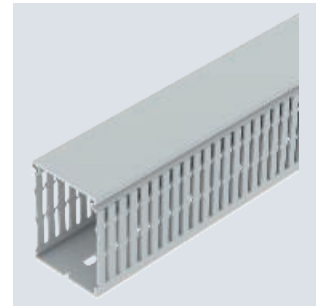
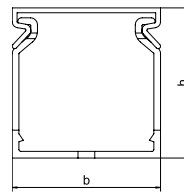


PC / ABS

Wiring trunking, type LK4H N 80060

Type	Colour	Length mm	Width mm	Height mm	Pack m	Weight kg/100 m	Item no.
LK4H N 80060	Light grey	2000	60	80	2	54.000	6132564

Halogen-free wiring duct, incl. cover and base perforation, for horizontal and vertical routing of electrical cables in the switchgear cabinet. With double-sided adhesive tape on the duct base as a mounting aid. Designed as a metric duct. Retainers are broken out without tools. Special lengths on request.

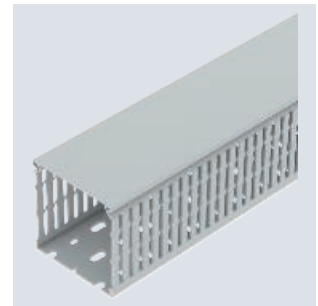
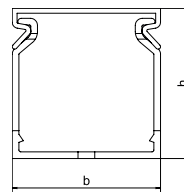


PC / ABS

Wiring trunking, type LK4H N 80080

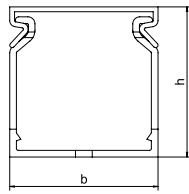
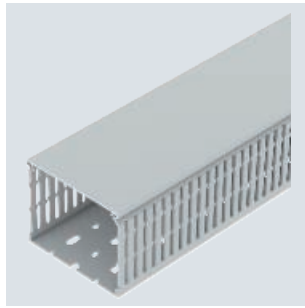
Type	Colour	Length mm	Width mm	Height mm	Pack m	Weight kg/100 m	Item no.
LK4H N 80080	Light grey	2000	80	80	2	62.000	6132566

Halogen-free wiring duct, incl. cover and base perforation, for horizontal and vertical routing of electrical cables in the switchgear cabinet. With double-sided adhesive tape on the duct base as a mounting aid. Designed as a metric duct. Retainers are broken out without tools. Special lengths on request.



Wiring trunking, type LK4H N 80100

PC/
ABS

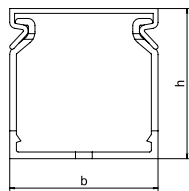
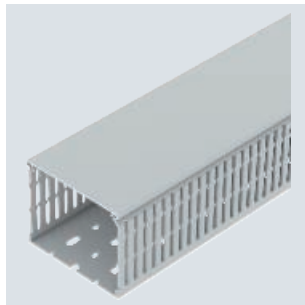


Type	Colour	Length mm	Width mm	Height mm	Pack m	Weight kg/100 m	Item no.
LK4H N 80100	Light grey	2000	100	80	2	67.000	6132568

Halogen-free wiring duct, incl. cover and base perforation, for horizontal and vertical routing of electrical cables in the switchgear cabinet. With double-sided adhesive tape on the duct base as a mounting aid. Designed as a metric duct. Retainers are broken out without tools. Special lengths on request.

Wiring trunking, type LK4H N 80120

PC/
ABS

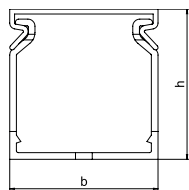


Type	Colour	Length mm	Width mm	Height mm	Pack m	Weight kg/100 m	Item no.
LK4H N 80120	Light grey	1000	120	80	2	80.000	6132569

Halogen-free wiring duct, incl. cover and base perforation, for horizontal and vertical routing of electrical cables in the switchgear cabinet. With double-sided adhesive tape on the duct base as a mounting aid. Designed as a metric duct. Retainers are broken out without tools. Special lengths on request.

Wiring trunking, type LK4H N 10040

PC/
ABS

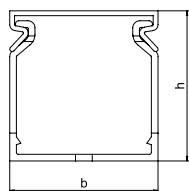
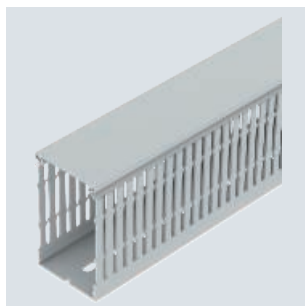


Type	Colour	Length mm	Width mm	Height mm	Pack m	Weight kg/100 m	Item no.
LK4H N 10040	Light grey	2000	40	100	2	90.000	6132570

Halogen-free wiring duct, incl. cover and base perforation, for horizontal and vertical routing of electrical cables in the switchgear cabinet. With double-sided adhesive tape on the duct base as a mounting aid. Designed as a metric duct. Retainers are broken out without tools. Special lengths on request.

Wiring trunking, type LK4H N 10060

PC/
ABS



Type	Colour	Length mm	Width mm	Height mm	Pack m	Weight kg/100 m	Item no.
LK4H N 10060	Light grey	2000	60	100	2	66.000	6132572

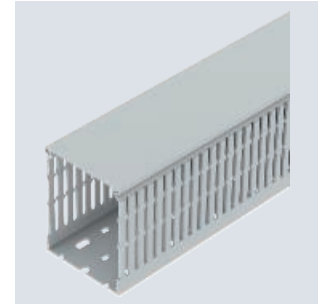
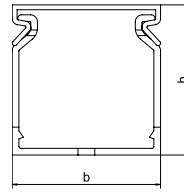
Halogen-free wiring duct, incl. cover and base perforation, for horizontal and vertical routing of electrical cables in the switchgear cabinet. With double-sided adhesive tape on the duct base as a mounting aid. Designed as a metric duct. Retainers are broken out without tools. Special lengths on request.

PC/
ABS

Wiring trunking, type LK4H N 10080

Type	Colour	Length mm	Width mm	Height mm	Pack m	Weight kg/100 m	Item no.
LK4H N 10080	Light grey	2000	80	100	2	90.000	6132574

Halogen-free wiring duct, incl. cover and base perforation, for horizontal and vertical routing of electrical cables in the switchgear cabinet. With double-sided adhesive tape on the duct base as a mounting aid. Designed as a metric duct. Retainers are broken out without tools. Special lengths on request.

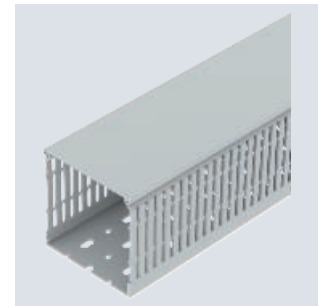
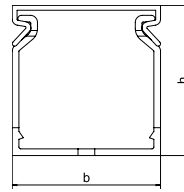


PC/
ABS

Wiring trunking, type LK4H N 100100

Type	Colour	Length mm	Width mm	Height mm	Pack m	Weight kg/100 m	Item no.
LK4H N 100100	Light grey	2000	100	100	2	90.000	6132576

Halogen-free wiring duct, incl. cover and base perforation, for horizontal and vertical routing of electrical cables in the switchgear cabinet. With double-sided adhesive tape on the duct base as a mounting aid. Designed as a metric duct. Retainers are broken out without tools. Special lengths on request.



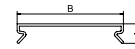
Covers, LK4H wiring trunking

PC/
ABS

Cover LK4H 25

Type	Colour	Length mm	Width mm	Height mm	Pack m	Weight kg/100 m	Item no.
LK4H D 25	Light grey	2000	25	10	2	8.000	6132580

Trunking cover for replacement requirements.

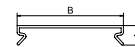


PC/
ABS

Cover LK4H 40

Type	Colour	Length mm	Width mm	Height mm	Pack m	Weight kg/100 m	Item no.
LK4H D 40	Light grey	2000	40	10	2	13.000	6132585

Trunking cover for replacement requirements.

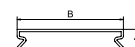


PC/
ABS

Cover LK4H 60

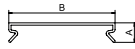
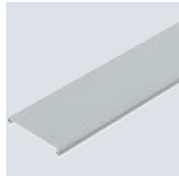
Type	Colour	Length mm	Width mm	Height mm	Pack m	Weight kg/100 m	Item no.
LK4H D 60	Light grey	2000	60	10	2	20.000	6132582

Trunking cover for replacement requirements.



Cover LK4H 80

PC/
ABS

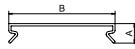
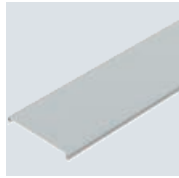


Type	Colour	Length mm	Width mm	Height mm	Pack m	Weight kg/100 m	Item no.
LK4H D 80	Light grey	2000	80	10	2	26.000	6132584

Trunking cover for replacement requirements.

Cover LK4H 100

PC/
ABS



Type	Colour	Length mm	Width mm	Height mm	Pack m	Weight kg/100 m	Item no.
LK4H D 100	Light grey	2000	100	10	2	30.000	6132586

Trunking cover for replacement requirements.

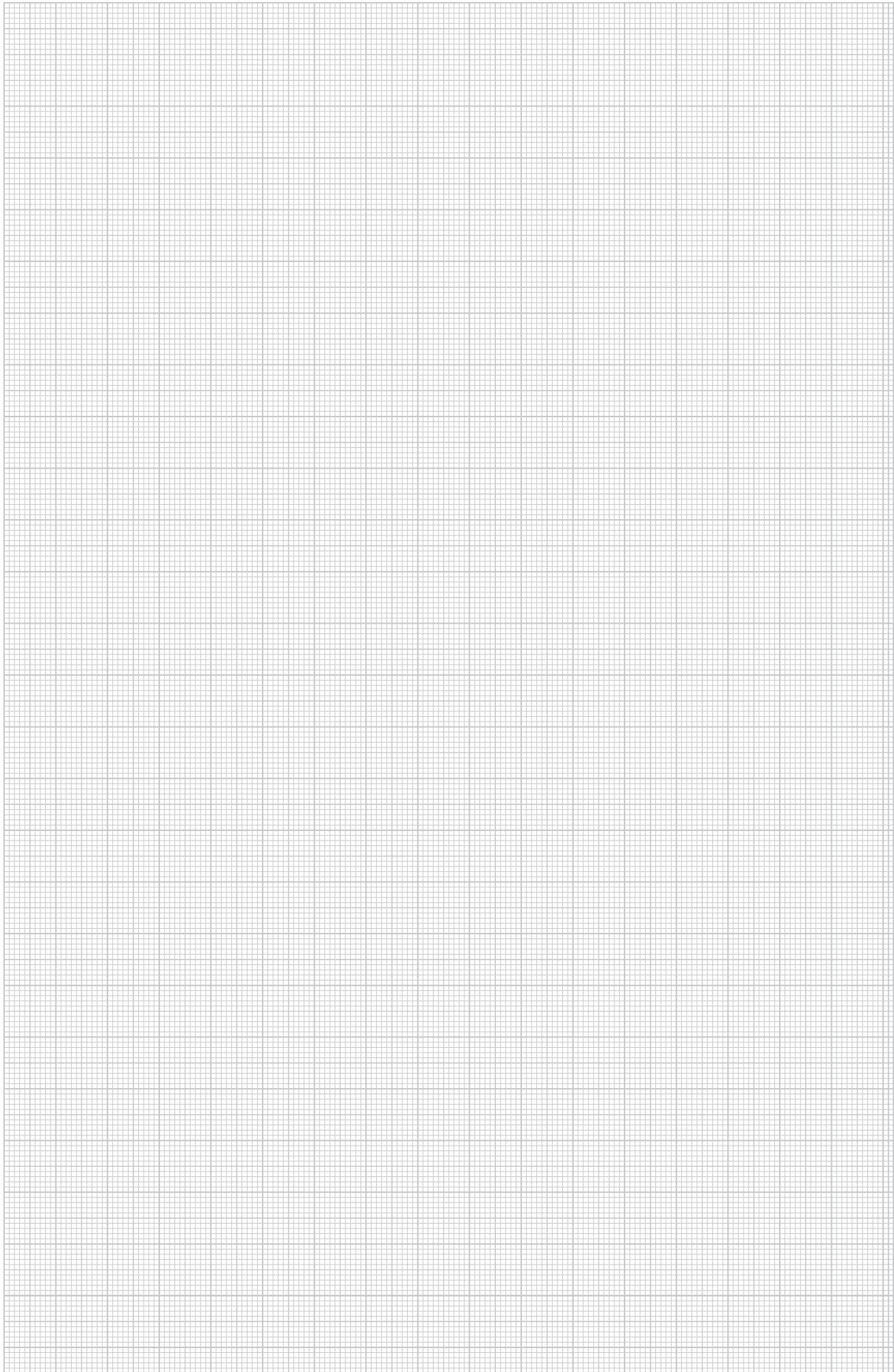
Trunking retaining clip VDK HF KHUni

PC/
ABS



Type	Colour	Length mm	Width mm	Height mm	Pack Piece	Weight kg/100 pc.	Item no.
VKHK	Light grey	76	20	22	25	0.500	6132594

Wire retaining clip for HF-METRA wiring trunking.



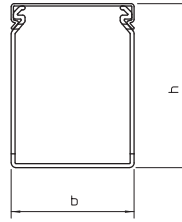
LKV DIN wiring trunking system

PVC

Type	Colour	Length mm	Dimension W x H mm		Pack m	Weight kg/100 m	Item no.
			W	H			
LKV 25025	Stone grey	2000	25	25	32	24.000	6178302

Wiring duct according to DIN EN 50085-2-3, incl. cover and base perforation, for horizontal and vertical routing of electrical cables in the switchgear cabinet. Designed as a DIN duct. Retainers are broken out without tools. The flush-floor routing of cables is possible through predetermined break points. Tested to DIN EN 50085-2-3. Special lengths on request.

Wiring trunking, type LKV 25025

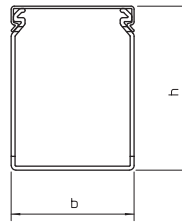


PVC

Type	Colour	Length mm	Dimension W x H mm		Pack m	Weight kg/100 m	Item no.
			W	H			
LKV 37025	Stone grey	2000	25	37,5	32	31.500	6178305

Wiring duct according to DIN EN 50085-2-3, incl. cover and base perforation, for horizontal and vertical routing of electrical cables in the switchgear cabinet. Designed as a DIN duct. Retainers are broken out without tools. The flush-floor routing of cables is possible through predetermined break points. Tested to DIN EN 50085-2-3. Special lengths on request.

Wiring trunking, type LKV 37025

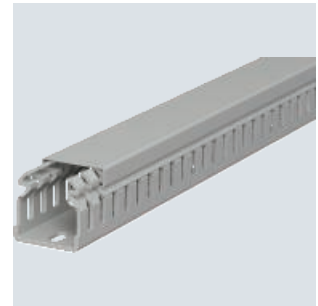
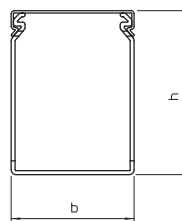


PVC

Type	Colour	Length mm	Dimension W x H mm		Pack m	Weight kg/100 m	Item no.
			W	H			
LKV 37037	Stone grey	2000	37,5	37,5	60	40.500	6178307

Wiring duct according to DIN EN 50085-2-3, incl. cover and base perforation, for horizontal and vertical routing of electrical cables in the switchgear cabinet. Designed as a DIN duct. Retainers are broken out without tools. The flush-floor routing of cables is possible through predetermined break points. Tested to DIN EN 50085-2-3. Special lengths on request.

Wiring trunking, type LKV 37037

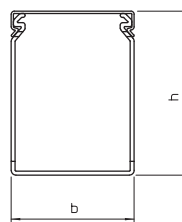


PVC

Type	Colour	Length mm	Dimension W x H mm		Pack m	Weight kg/100 m	Item no.
			W	H			
LKV 50025	Stone grey	2000	25	50	60	35.500	6178310

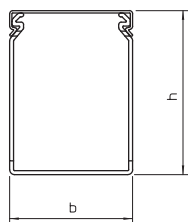
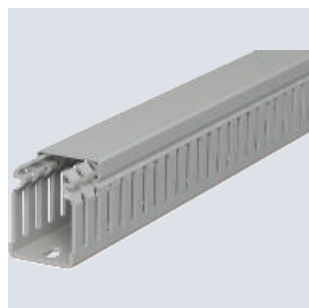
Wiring duct according to DIN EN 50085-2-3, incl. cover and base perforation, for horizontal and vertical routing of electrical cables in the switchgear cabinet. Designed as a DIN duct. Retainers are broken out without tools. The flush-floor routing of cables is possible through predetermined break points. Tested to DIN EN 50085-2-3. Special lengths on request.

Wiring trunking, type LKV 50025



Wiring trunking, type LKV 50037

PVC

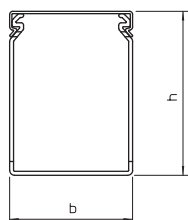
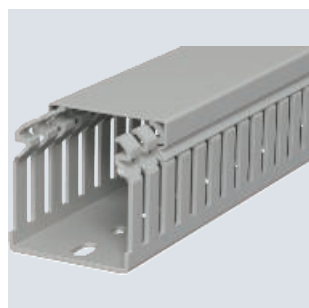


Type	Colour	Length mm	Dimension		Pack m	Weight kg/100 m	Item no.
			W x H mm				
LKV 50037	Stone grey	2000	37,5x50		48	44.500	6178312

Wiring duct according to DIN EN 50085-2-3, incl. cover and base perforation, for horizontal and vertical routing of electrical cables in the switchgear cabinet. Designed as a DIN duct. Retainers are broken out without tools. The flush-floor routing of cables is possible through predetermined break points. Tested to DIN EN 50085-2-3. Special lengths on request.

Wiring trunking, type LKV 50050

PVC

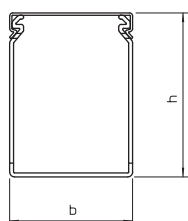
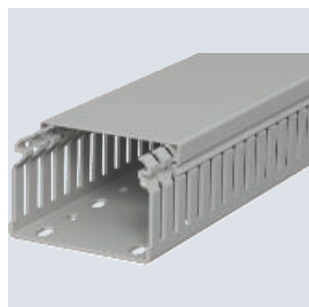


Type	Colour	Length mm	Dimension		Pack m	Weight kg/100 m	Item no.
			W x H mm				
LKV 50050	Stone grey	2000	50x50		36	50.000	6178314

Wiring duct according to DIN EN 50085-2-3, incl. cover and base perforation, for horizontal and vertical routing of electrical cables in the switchgear cabinet. Designed as a DIN duct. Retainers are broken out without tools. The flush-floor routing of cables is possible through predetermined break points. Tested to DIN EN 50085-2-3. Special lengths on request.

Wiring trunking, type LKV 50075

PVC

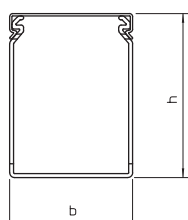
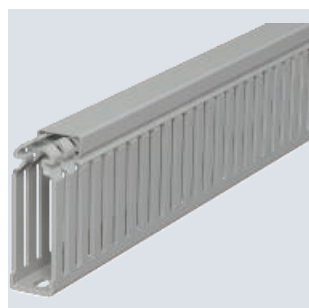


Type	Colour	Length mm	Dimension		Pack m	Weight kg/100 m	Item no.
			W x H mm				
LKV 50075	Stone grey	2000	75x50		24	66.000	6178316

Wiring duct according to DIN EN 50085-2-3, incl. cover and base perforation, for horizontal and vertical routing of electrical cables in the switchgear cabinet. Designed as a DIN duct. Retainers are broken out without tools. The flush-floor routing of cables is possible through predetermined break points. Tested to DIN EN 50085-2-3. Special lengths on request.

Wiring trunking, type LKV 75025

PVC



Type	Colour	Length mm	Dimension		Pack m	Weight kg/100 m	Item no.
			W x H mm				
LKV 75025	Stone grey	2000	25x75		40	48.500	6178320

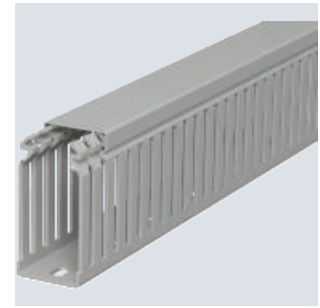
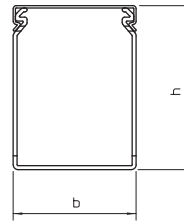
Wiring duct according to DIN EN 50085-2-3, incl. cover and base perforation, for horizontal and vertical routing of electrical cables in the switchgear cabinet. Designed as a DIN duct. Retainers are broken out without tools. The flush-floor routing of cables is possible through predetermined break points. Tested to DIN EN 50085-2-3. Special lengths on request.

PVC

Type	Colour	Length mm	Dimension W x H mm		Pack m	Weight kg/100 m	Item no.
			W	H			
LKV 75037	Stone grey	2000	37,5	75	32	58.500	6178322

Wiring duct according to DIN EN 50085-2-3, incl. cover and base perforation, for horizontal and vertical routing of electrical cables in the switchgear cabinet. Designed as a DIN duct. Retainers are broken out without tools. The flush-floor routing of cables is possible through predetermined break points. Tested to DIN EN 50085-2-3. Special lengths on request.

Wiring trunking, type LKV 75037

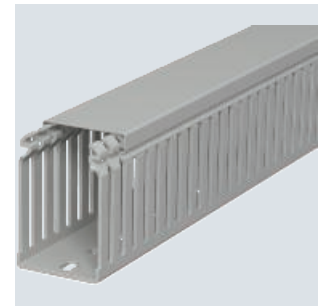
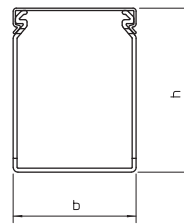


PVC

Type	Colour	Length mm	Dimension W x H mm		Pack m	Weight kg/100 m	Item no.
			W	H			
LKV 75050	Stone grey	2000	50	75	24	67.500	6178324

Wiring duct according to DIN EN 50085-2-3, incl. cover and base perforation, for horizontal and vertical routing of electrical cables in the switchgear cabinet. Designed as a DIN duct. Retainers are broken out without tools. The flush-floor routing of cables is possible through predetermined break points. Tested to DIN EN 50085-2-3. Special lengths on request.

Wiring trunking, type LKV 75050

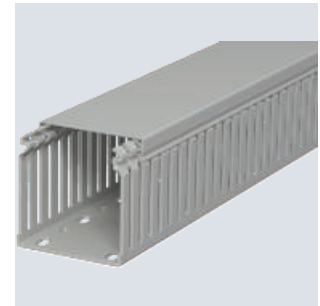
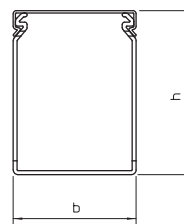


PVC

Type	Colour	Length mm	Dimension W x H mm		Pack m	Weight kg/100 m	Item no.
			W	H			
LKV 75075	Stone grey	2000	75	75	16	80.000	6178326

Wiring duct according to DIN EN 50085-2-3, incl. cover and base perforation, for horizontal and vertical routing of electrical cables in the switchgear cabinet. Designed as a DIN duct. Retainers are broken out without tools. The flush-floor routing of cables is possible through predetermined break points. Tested to DIN EN 50085-2-3. Special lengths on request.

Wiring trunking, type LKV 75075

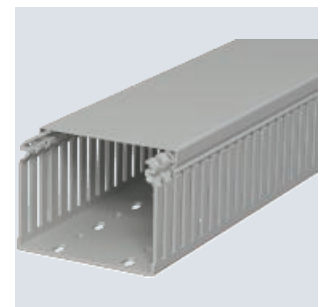
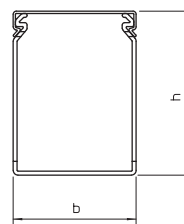


PVC

Type	Colour	Length mm	Dimension W x H mm		Pack m	Weight kg/100 m	Item no.
			W	H			
LKV 75100	Stone grey	2000	100	75	16	105.500	6178328

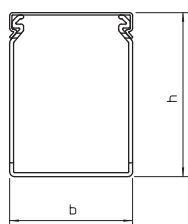
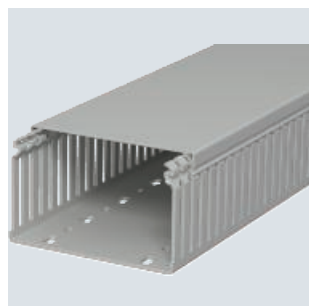
Wiring duct according to DIN EN 50085-2-3, incl. cover and base perforation, for horizontal and vertical routing of electrical cables in the switchgear cabinet. Designed as a DIN duct. Retainers are broken out without tools. The flush-floor routing of cables is possible through predetermined break points. Tested to DIN EN 50085-2-3. Special lengths on request.

Wiring trunking, type LKV 75100



Wiring trunking, type LKV 75125

PVC

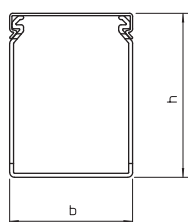


Type	Colour	Length mm	Dimension		Pack m	Weight		Item no.
			W x H mm			m	kg/100 m	
LKV 75125	Stone grey	2000	125 x 75		8	128.500		6178330

Wiring duct according to DIN EN 50085-2-3, incl. cover and base perforation, for horizontal and vertical routing of electrical cables in the switchgear cabinet. Designed as a DIN duct. Retainers are broken out without tools. The flush-floor routing of cables is possible through predetermined break points. Tested to DIN EN 50085-2-3. Special lengths on request.

Wiring trunking, type LKV 10037

PVC

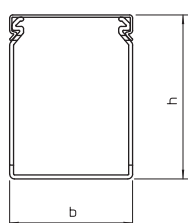
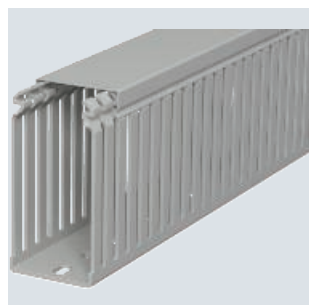


Type	Colour	Length mm	Dimension		Pack m	Weight		Item no.
			W x H mm			m	kg/100 m	
LKV 10037	Stone grey	2000	37,5x100		32	67.000		6178334

Wiring duct according to DIN EN 50085-2-3, incl. cover and base perforation, for horizontal and vertical routing of electrical cables in the switchgear cabinet. Designed as a DIN duct. Retainers are broken out without tools. The flush-floor routing of cables is possible through predetermined break points. Tested to DIN EN 50085-2-3. Special lengths on request.

Wiring trunking, type LKV 10050

PVC

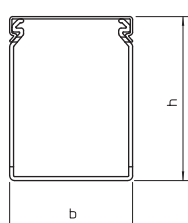
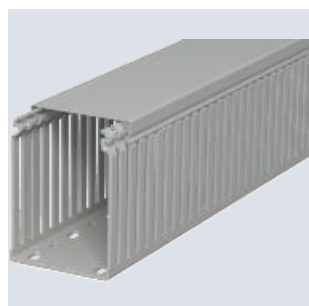


Type	Colour	Length mm	Dimension		Pack m	Weight		Item no.
			W x H mm			m	kg/100 m	
LKV 10050	Stone grey	2000	50x100		24	77.000		6178336

Wiring duct according to DIN EN 50085-2-3, incl. cover and base perforation, for horizontal and vertical routing of electrical cables in the switchgear cabinet. Designed as a DIN duct. Retainers are broken out without tools. The flush-floor routing of cables is possible through predetermined break points. Tested to DIN EN 50085-2-3. Special lengths on request.

Wiring trunking, type LKV 10075

PVC



Type	Colour	Length mm	Dimension		Pack m	Weight		Item no.
			W x H mm			m	kg/100 m	
LKV 10075	Stone grey	2000	75x100		16	96.000		6178338

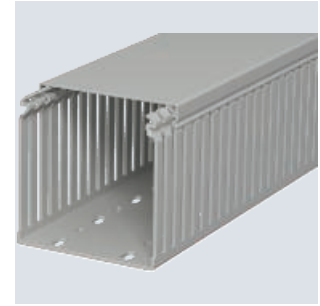
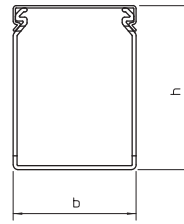
Wiring duct according to DIN EN 50085-2-3, incl. cover and base perforation, for horizontal and vertical routing of electrical cables in the switchgear cabinet. Designed as a DIN duct. Retainers are broken out without tools. The flush-floor routing of cables is possible through predetermined break points. Tested to DIN EN 50085-2-3. Special lengths on request.

PVC

Wiring trunking, type LKV 100100

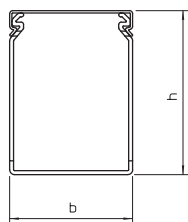
Type	Colour	Length mm	Dimension W x H mm		Pack m	Weight kg/100 m	Item no.
			W	H			
LKV 100100	Stone grey	2000	100	100	8	116.500	6178341

Wiring duct according to DIN EN 50085-2-3, incl. cover and base perforation, for horizontal and vertical routing of electrical cables in the switchgear cabinet. Designed as a DIN duct. Retainers are broken out without tools. The flush-floor routing of cables is possible through predetermined break points. Tested to DIN EN 50085-2-3. Special lengths on request.



Wiring trunking, type LKV N 75025

PVC

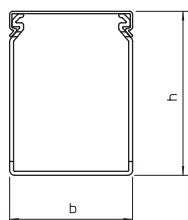


Type	Colour	Length mm	Dimension		Pack m	Weight kg/100 m	Item no.
			W x H mm				
LKV N 75025	Stone grey	2000	25x75		40	49.500	6178420

Wiring duct according to DIN EN 50085-2-3, incl. cover and base perforation, for horizontal and vertical routing of electrical cables in the switchgear cabinet. Designed as a DIN duct. Retainers are broken out without tools. The flush-floor routing of cables is possible through predetermined break points. Tapering in the side slots prevents the cables from falling out. Tested to DIN EN 50085-2-3. Special lengths on request.

Wiring trunking, type LKV N 75037

PVC

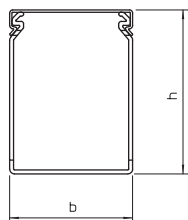
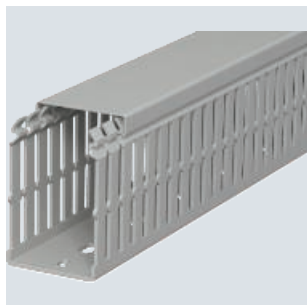


Type	Colour	Length mm	Dimension		Pack m	Weight kg/100 m	Item no.
			W x H mm				
LKV N 75037	Stone grey	2000	37,5x75		32	60.500	6178422

Wiring duct according to DIN EN 50085-2-3, incl. cover and base perforation, for horizontal and vertical routing of electrical cables in the switchgear cabinet. Designed as a DIN duct. Retainers are broken out without tools. The flush-floor routing of cables is possible through predetermined break points. Tapering in the side slots prevents the cables from falling out. Tested to DIN EN 50085-2-3. Special lengths on request.

Wiring trunking, type LKV N 75050

PVC

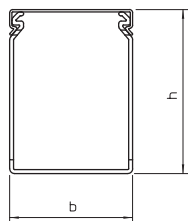
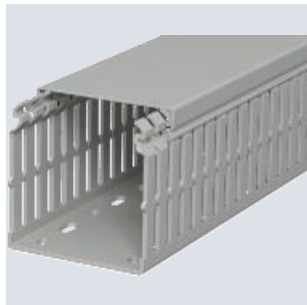


Type	Colour	Length mm	Dimension		Pack m	Weight kg/100 m	Item no.
			W x H mm				
LKV N 75050	Stone grey	2000	50x75		24	72.500	6178424

Wiring duct according to DIN EN 50085-2-3, incl. cover and base perforation, for horizontal and vertical routing of electrical cables in the switchgear cabinet. Designed as a DIN duct. Retainers are broken out without tools. The flush-floor routing of cables is possible through predetermined break points. Tapering in the side slots prevents the cables from falling out. Tested to DIN EN 50085-2-3. Special lengths on request.

Wiring trunking, type LKV N 75075

PVC



Type	Colour	Length mm	Dimension		Pack m	Weight kg/100 m	Item no.
			W x H mm				
LKV N 75075	Stone grey	2000	75x75		16	84.500	6178426

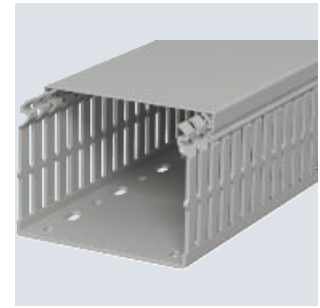
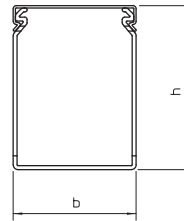
Wiring duct according to DIN EN 50085-2-3, incl. cover and base perforation, for horizontal and vertical routing of electrical cables in the switchgear cabinet. Designed as a DIN duct. Retainers are broken out without tools. The flush-floor routing of cables is possible through predetermined break points. Tapering in the side slots prevents the cables from falling out. Tested to DIN EN 50085-2-3. Special lengths on request.

PVC

Type	Colour	Length mm	Dimension W x H mm		Pack m	Weight kg/100 m	Item no.
			W	H			
LKV N 75100	Stone grey	2000	100	75	16	112.000	6178428

Wiring duct according to DIN EN 50085-2-3, incl. cover and base perforation, for horizontal and vertical routing of electrical cables in the switchgear cabinet. Designed as a DIN duct. Retainers are broken out without tools. The flush-floor routing of cables is possible through predetermined break points. Tapering in the side slots prevents the cables from falling out. Tested to DIN EN 50085-2-3. Special lengths on request.

Wiring trunking, type LKV N 75100

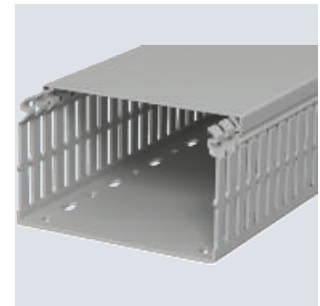
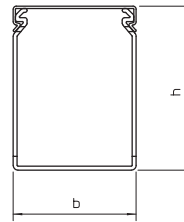


PVC

Type	Colour	Length mm	Dimension W x H mm		Pack m	Weight kg/100 m	Item no.
			W	H			
LKV N 75125	Stone grey	2000	125	75	8	138.500	6178430

Wiring duct according to DIN EN 50085-2-3, incl. cover and base perforation, for horizontal and vertical routing of electrical cables in the switchgear cabinet. Designed as a DIN duct. Retainers are broken out without tools. The flush-floor routing of cables is possible through predetermined break points. Tapering in the side slots prevents the cables from falling out. Tested to DIN EN 50085-2-3. Special lengths on request.

Wiring trunking, type LKV N 75125

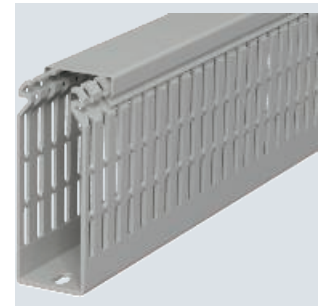
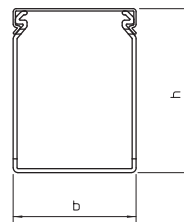


PVC

Type	Colour	Length mm	Dimension W x H mm		Pack m	Weight kg/100 m	Item no.
			W	H			
LKV N 10037	Stone grey	2000	37,5	100	32	73.000	6178435

Wiring duct according to DIN EN 50085-2-3, incl. cover and base perforation, for horizontal and vertical routing of electrical cables in the switchgear cabinet. Designed as a DIN duct. Retainers are broken out without tools. The flush-floor routing of cables is possible through predetermined break points. Tapering in the side slots prevents the cables from falling out. Tested to DIN EN 50085-2-3. Special lengths on request.

Wiring trunking, type LKV N 10037

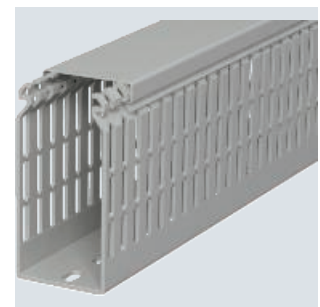
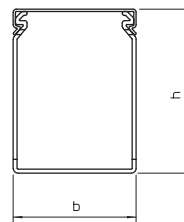


PVC

Type	Colour	Length mm	Dimension W x H mm		Pack m	Weight kg/100 m	Item no.
			W	H			
LKV N 10050	Stone grey	2000	50	100	24	83.000	6178437

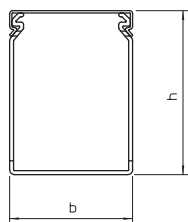
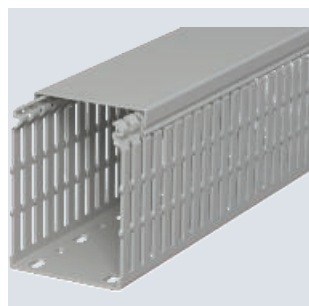
Wiring duct according to DIN EN 50085-2-3, incl. cover and base perforation, for horizontal and vertical routing of electrical cables in the switchgear cabinet. Designed as a DIN duct. Retainers are broken out without tools. The flush-floor routing of cables is possible through predetermined break points. Tapering in the side slots prevents the cables from falling out. Tested to DIN EN 50085-2-3. Special lengths on request.

Wiring trunking, type LKV N 10050



Wiring trunking, type LKV N 10075

PVC

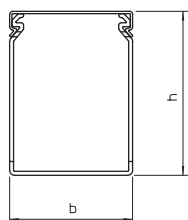
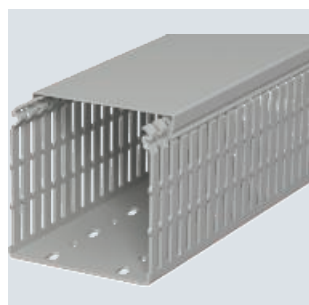


Type	Colour	Length mm	Dimension		Pack m	Weight kg/100 m	Item no.
			Length mm	W x H mm			
LKV N 10075	Stone grey	2000	75x100		16	102.000	6178439

Wiring duct according to DIN EN 50085-2-3, incl. cover and base perforation, for horizontal and vertical routing of electrical cables in the switchgear cabinet. Designed as a DIN duct. Retainers are broken out without tools. The flush-floor routing of cables is possible through predetermined break points. Tapering in the side slots prevents the cables from falling out. Tested to DIN EN 50085-2-3. Special lengths on request.

Wiring trunking, type LKV N 100100

PVC



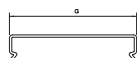
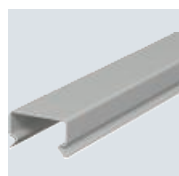
Type	Colour	Length mm	Dimension		Pack m	Weight kg/100 m	Item no.
			Length mm	W x H mm			
LKV N 100100	Stone grey	2000	100x100		8	122.500	6178441

Wiring duct according to DIN EN 50085-2-3, incl. cover and base perforation, for horizontal and vertical routing of electrical cables in the switchgear cabinet. Designed as a DIN duct. Retainers are broken out without tools. The flush-floor routing of cables is possible through predetermined break points. Tapering in the side slots prevents the cables from falling out. Tested to DIN EN 50085-2-3. Special lengths on request.

Covers, LKV wiring trunking

Cover LKV D 25

PVC

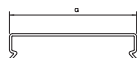


Type	Colour	Dim.		Pack m	Weight kg/100 m	Item no.
		a mm	Length mm			
LKV D 25	Stone grey	25	2000	36	9.500	6178504

Trunking cover for replacement requirements.

Cover LKV D 37

PVC



Type	Colour	Dim.		Pack m	Weight kg/100 m	Item no.
		a mm	Length mm			
LKV D 37	Stone grey	37.5	2000	24	15.000	6178506

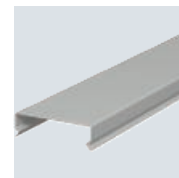
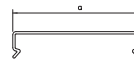
Trunking cover for replacement requirements.

PVC

Cover LKV D 50

Type	Colour	Dim.		Pack	Weight	Item no.
		a	Length			
		mm	mm	m	kg/100 m	
LKV D 50	Stone grey	50	2000	24	17.500	6178508

Trunking cover for replacement requirements.

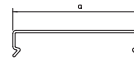


PVC

Cover LKV D 75

Type	Colour	Dim.		Pack	Weight	Item no.
		a	Length			
		mm	mm	m	kg/100 m	
LKV D 75	Stone grey	75	2000	12	23.000	6178510

Trunking cover for replacement requirements.

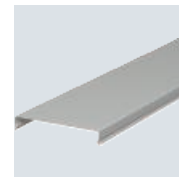
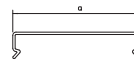


PVC

Cover LKV D 100

Type	Colour	Dim.		Pack	Weight	Item no.
		a	Length			
		mm	mm	m	kg/100 m	
LKV D 100	Stone grey	100	2000	12	34.500	6178512

Trunking cover for replacement requirements.

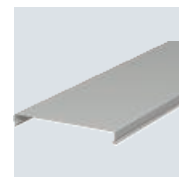


PVC

Cover LKV D 125

Type	Colour	Dim.		Pack	Weight	Item no.
		a	Length			
		mm	mm	m	kg/100 m	
LKV D 125	Stone grey	125	2000	16	47.000	6178514

Trunking cover for replacement requirements.



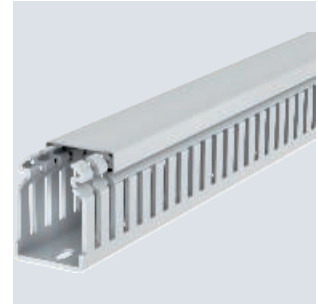
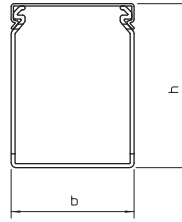
LKVH DIN halogen-free wiring trunking system

PC / ABS

Wiring trunking, type LKV H 50037

Type	Colour	Length mm	Dimension W x H mm		Pack m	Weight kg/100 m	Item no.
			W	H			
LKVH 50037	Light grey	2000	37,5	50	48	32.000	6178582

Halogen-free wiring duct according to DIN EN 50085-2-3, incl. cover and base perforation, for horizontal and vertical routing of electrical cables in the switchgear cabinet. Designed as a DIN duct. Retainers are broken out without tools. The flush-floor routing of cables is possible through predetermined break points. Tested to DIN EN 50085-2-3. Special lengths on request.

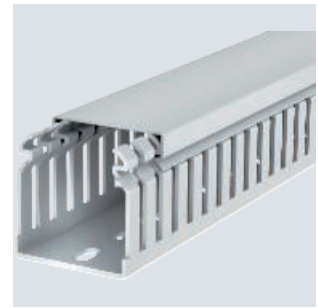
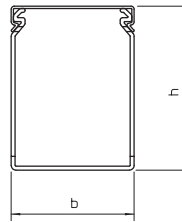


PC / ABS

Wiring trunking, type LKV H 50050

Type	Colour	Length mm	Dimension W x H mm		Pack m	Weight kg/100 m	Item no.
			W	H			
LKVH 50050	Light grey	2000	50	50	36	37.000	6178585

Halogen-free wiring duct according to DIN EN 50085-2-3, incl. cover and base perforation, for horizontal and vertical routing of electrical cables in the switchgear cabinet. Designed as a DIN duct. Retainers are broken out without tools. The flush-floor routing of cables is possible through predetermined break points. Tested to DIN EN 50085-2-3. Special lengths on request.

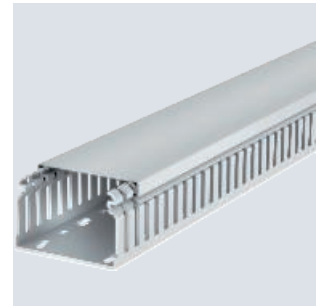
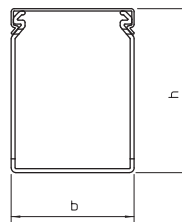


PC / ABS

Wiring trunking, type LKV H 50075

Type	Colour	Length mm	Dimension W x H mm		Pack m	Weight kg/100 m	Item no.
			W	H			
LKVH 50075	Light grey	2000	75	50	24	52.000	6178588

Halogen-free wiring duct according to DIN EN 50085-2-3, incl. cover and base perforation, for horizontal and vertical routing of electrical cables in the switchgear cabinet. Designed as a DIN duct. Retainers are broken out without tools. The flush-floor routing of cables is possible through predetermined break points. Tested to DIN EN 50085-2-3. Special lengths on request.

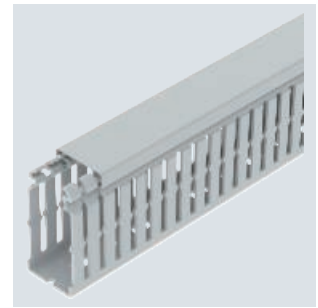
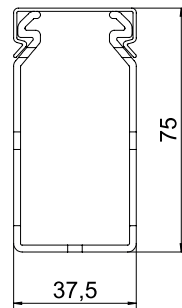


PC / ABS

Wiring trunking, type LKV H 75037

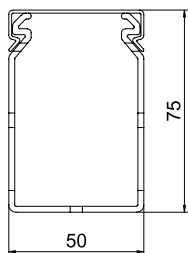
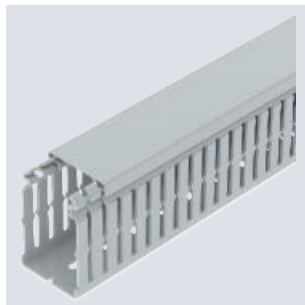
Type	Colour	Length mm	Dimension W x H mm		Pack m	Weight kg/100 m	Item no.
			W	H			
LKVH N 75037	Light grey	2000	37,5	75	32	44.000	6178552

Halogen-free wiring duct according to DIN EN 50085-2-3, incl. cover and base perforation, for horizontal and vertical routing of electrical cables in the switchgear cabinet. Designed as a DIN duct. Retainers are broken out without tools. The flush-floor routing of cables is possible through predetermined break points. Tapering in the side slots prevents the cables from falling out. Tested to DIN EN 50085-2-3. Special lengths on request.



Wiring trunking, type LKV H 75050

PC/
ABS

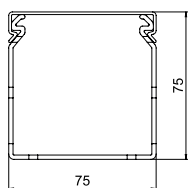
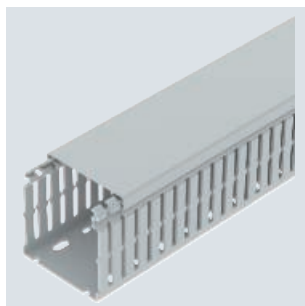


Type	Colour	Length mm	Dimension W x H mm		Pack m	Weight kg/100 m	Item no.
			W	H			
LKVH N 75050	Light grey	2000	50	75	24	51.000	6178556

Halogen-free wiring duct according to DIN EN 50085-2-3, incl. cover and base perforation, for horizontal and vertical routing of electrical cables in the switchgear cabinet. Designed as a DIN duct. Retainers are broken out without tools. The flush-floor routing of cables is possible through predetermined break points. Tapering in the side slots prevents the cables from falling out. Tested to DIN EN 50085-2-3. Special lengths on request.

Wiring trunking, type LKV H 75075

PC/
ABS

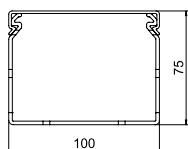
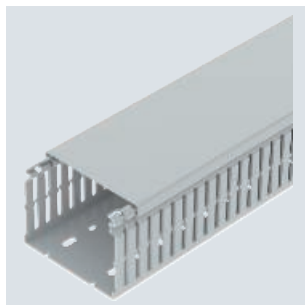


Type	Colour	Length mm	Dimension W x H mm		Pack m	Weight kg/100 m	Item no.
			W	H			
LKVH N 75075	Light grey	2000	75	75	16	64.000	6178559

Halogen-free wiring duct according to DIN EN 50085-2-3, incl. cover and base perforation, for horizontal and vertical routing of electrical cables in the switchgear cabinet. Designed as a DIN duct. Retainers are broken out without tools. The flush-floor routing of cables is possible through predetermined break points. Tapering in the side slots prevents the cables from falling out. Tested to DIN EN 50085-2-3. Special lengths on request.

Wiring trunking, type LKV H 75100

PC/
ABS

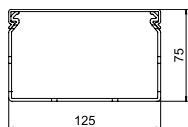
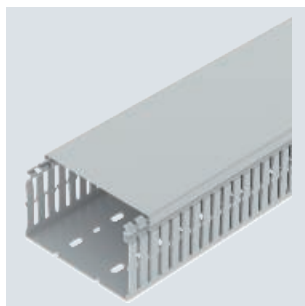


Type	Colour	Length mm	Dimension W x H mm		Pack m	Weight kg/100 m	Item no.
			W	H			
LKVH N 75100	Light grey	2000	100	75	16	84.000	6178563

Halogen-free wiring duct according to DIN EN 50085-2-3, incl. cover and base perforation, for horizontal and vertical routing of electrical cables in the switchgear cabinet. Designed as a DIN duct. Retainers are broken out without tools. The flush-floor routing of cables is possible through predetermined break points. Tapering in the side slots prevents the cables from falling out. Tested to DIN EN 50085-2-3. Special lengths on request.

Wiring trunking, type LKV H 75125

PC/
ABS



Type	Colour	Length mm	Dimension W x H mm		Pack m	Weight kg/100 m	Item no.
			W	H			
LKVH N 75125	Light grey	2000	125	75	8	98.500	6178566

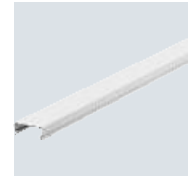
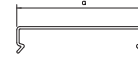
Halogen-free wiring duct according to DIN EN 50085-2-3, incl. cover and base perforation, for horizontal and vertical routing of electrical cables in the switchgear cabinet. Designed as a DIN duct. Retainers are broken out without tools. The flush-floor routing of cables is possible through predetermined break points. Tapering in the side slots prevents the cables from falling out. Tested to DIN EN 50085-2-3. Special lengths on request.

PC / ABS

Cover LKVH D 37

Type	Colour	Dim.		Pack m	Weight kg/100 m	Item no.
		a mm	Length mm			
LKVH D 37	Light grey	37.5	2000	24	8.500	6178670

Trunking cover for replacement requirements.



PC / ABS

Cover LKVH D 50

Type	Colour	Dim.		Pack m	Weight kg/100 m	Item no.
		a mm	Length mm			
LKVH D 50	Light grey	50	2000	24	11.000	6178674

Trunking cover for replacement requirements.

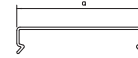


PC / ABS

Cover LKVH D 75

Type	Colour	Dim.		Pack m	Weight kg/100 m	Item no.
		a mm	Length mm			
LKVH D 75	Light grey	75	2000	12	18.000	6178678

Trunking cover for replacement requirements.



PC / ABS

Cover LKVH D 100

Type	Colour	Dim.		Pack m	Weight kg/100 m	Item no.
		a mm	Length mm			
LKVH D 100	Light grey	100	2000	12	27.500	6178682

Trunking cover for replacement requirements.

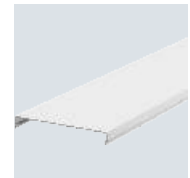
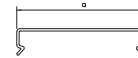


PC / ABS

Cover LKVH D 125

Type	Colour	Dim.		Pack m	Weight kg/100 m	Item no.
		a mm	Length mm			
LKVH D 125	Light grey	125	2000	16	34.500	6178686

Trunking cover for replacement requirements.



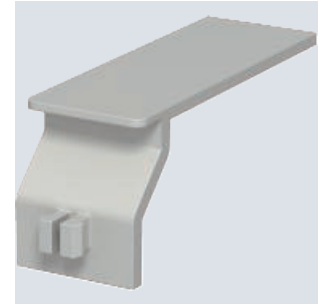
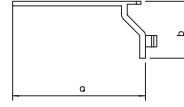
Wiring trunking system accessories

PS

Wire retainer for type LK4 and LK4/N

Type	Colour	Dim.		Pack Piece	Weight kg/100 pc.	Item no.
		a mm	b mm			
LK4 H	Stone grey	56	25	100	0.348	6178092

Wire retainer for wiring trunking, type LK4 and LK4/N. The wire retainer prevents already inserted cables from falling out. These predetermined breaking points allow the length to be reduced for various trunking widths to 38, 28 and 23 mm.

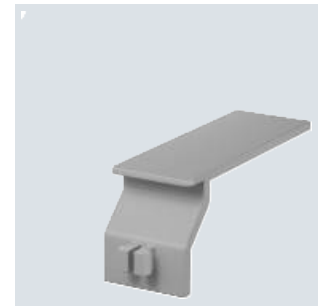
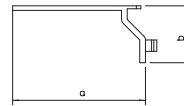


PS

Wire retainer for type LKV and LKV N

Type	Colour	Dim.		Pack Piece	Weight kg/100 pc.	Item no.
		a mm	b mm			
LKV H	Stone grey	56	25	100	0.343	6178349

Wire retainer for wiring trunking, type LKV and LKV/N. The wire retainer prevents already inserted cables from falling out. These predetermined breaking points allow the length to be reduced for various trunking widths to 38, 28 and 23 mm.

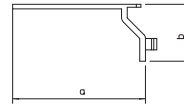


PS

Wire retainer for type LKV/H

Type	Colour	Dim.		Pack Piece	Weight kg/100 pc.	Item no.
		a mm	b mm			
LKV H H	Light grey	56	25	100	0.349	6178650

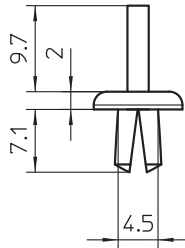
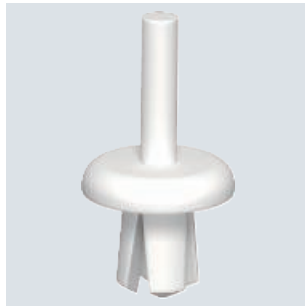
Wire retainer for halogen-free wiring trunking, type LKV/H. The wire retainer prevents already inserted cables from falling out. These predetermined breaking points allow the length to be reduced for various trunking widths to 38, 28 and 23 mm.



Spreading rivets

Spreading rivet, KSN 1

PP

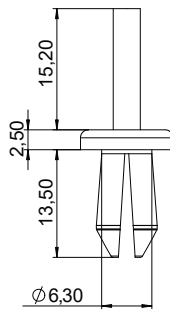


Type	Colour	Pack Piece	Weight kg/100 pc.	Item no.
KSN1	Light grey	100	0.026	6178520

The KNW1 riveting tool should be used for rapid mounting and for the optimum function.

Body-bound rivet, KSN 22

PA



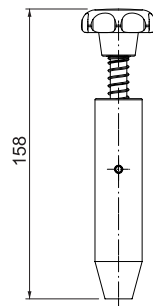
Type	Colour	Pack Piece	Weight kg/100 pc.	Item no.
KSN22	Light grey	100	0.070	6178525

The KNW2 riveting tool should be used for rapid mounting and for the optimum function.
Dimension of the drill hole: 6.5 mm.

Plastic rivet tools

Plastic rivet tool KNW1

POM

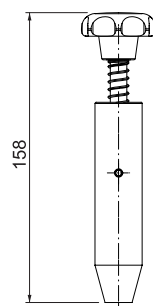


Type	Colour	Dimension	Pack Piece	Weight kg/100 pc.	Item no.
KNW1	Black	Ø4,5mm	1	9.300	6178527

Riveting tool for installing body-bound rivets of 4.5 mm.

Plastic rivet tool KNW2

POM



Type	Colour	Dimension	Pack Piece	Weight kg/100 pc.	Item no.
KNW2	Black	Ø6mm	1	9.400	6178529

Riveting tool for mounting spreading rivets of 6 mm.

Release pliers

St

Type	Pack Piece	Weight kg/100 pc.	Item no.
AKZ2	1	45.000	6178533

To notch the bars down to the trunking base.

Release pliers

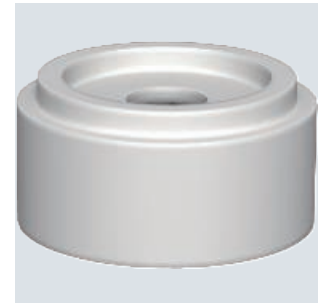
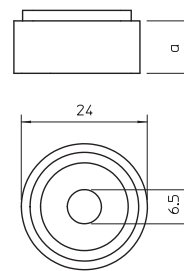


Spacer

PVC

Type	Colour	Dim. a mm	Pack Piece	Weight kg/100 pc.	Item no.
AH1	Grey	12	100	0.354	6178540
AH2	Grey	20	100	0.577	6178542

Stackable spacer for height compensation between the different component heights.



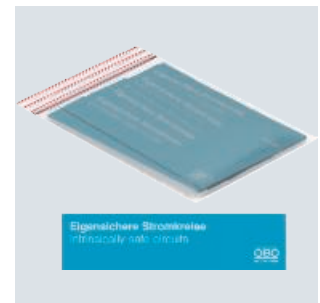
Spacer

Identification plates

Identification plate, intrinsically safe circuits

Type	Colour	Dimension mm	Pack Piece	Weight kg/100 pc.	Item no.
VK ISCS 5012	Light blue	99x25mm	20	0.100	6178643

Sticker as an identification plate to attach onto wiring trunking in switchgear cabinets with self-protected power circuits.



Hat profile rails

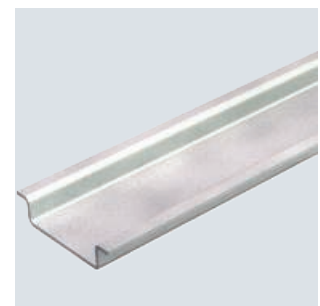
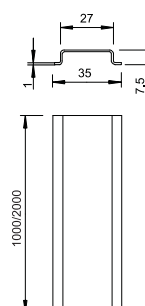
St GTP



Type	Version	Material thickness mm	Length mm	Bundle m	Weight kg/100 m	Item no.
2069 2M GTP	Unperforated	1	2000	50	36.040	1115650

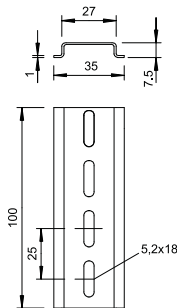
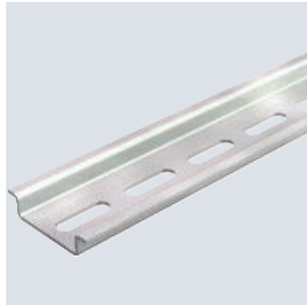
Hat profile rail 35 x 7.5 mm to DIN EN 60715 (formerly DIN EN 50022).

Hat profile rail, unperforated



Hat profile rails

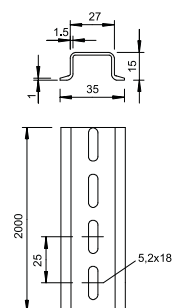
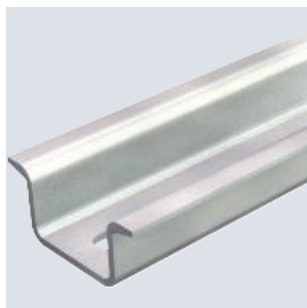
Hat profile rail, perforated



Type	Version	Material thickness mm	Length mm	Bundle m	Weight kg/100 m	Item no.
2069 2M GTP	Perforated	1	2000	50	33.280	1115669

Hat profile rail 35 x 7.5 mm to DIN EN 60715 (formerly DIN EN 50022).

Hat profile rail, perforated

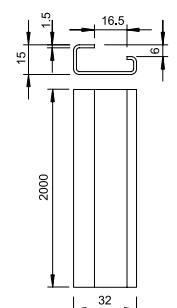
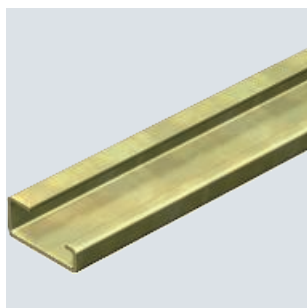


Type	Version	Material thickness mm	Length mm	Bundle m	Weight kg/100 m	Item no.
2069 15 1.5 GTP	Perforated	1.5	2000	20	64.000	1115456

Hat profile rail 35 x 15 mm similar to DIN EN 60715 (formerly DIN EN 50022), but with material thickness 1.5 mm.

Support rails

Support rail, unperforated



Type	Version	Material thickness mm	Length mm	Bundle m	Weight kg/100 m	Item no.
2064 GTP 2M	Unperforated	1.5	2000	20	70.000	1115057

G rail G32 to DIN EN 60715 (previously DIN EN 50035).

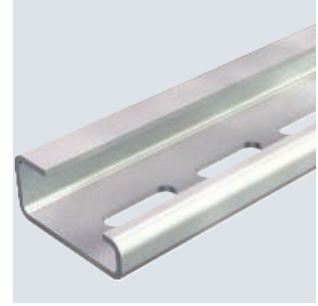
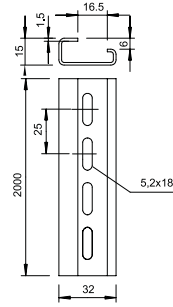
St GTP



Support rail, perforated

Type	Version	Material thickness mm	Length mm	Bundle m	Weight kg/100 m	Item no.
2064 GTPPL 2M	Perforated	1.5	2000	20	69.000	1115065

G rail G32 to DIN EN 60715 (previously DIN EN 50035).

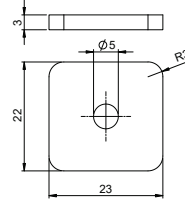


Washers

PVC

Type	Colour	Dim. h mm	Pack Piece	Weight kg/100 pc.	Item no.
ULS	Grey	3	100	0.170	6178548

Washer as compensation for different heights.



Washer

OBO Bettermann Holding GmbH & Co. KG

P.O. Box 1120
58694 Menden, Germany

Customer Service

Tel.: +49 23 73 89 - 17 00
export@obo.de

www.obo-bettermann.com

Building Connections

